

*Gas Governors Pmax 5 bar*



# Gas Governors Pmax 5 bar

## GAS GOVERNOR PMAX 5 BAR

---

GAS GOVERNOR ½", ¾", 1" – Pmax 5 bar p. 3

---

Gas Governor ½", ¾", 1" - High Capacity - 5 bar p. 5

---

GAS GOVERNOR 1 ¼", 1 ½" – Pmax 5 bar p. 7

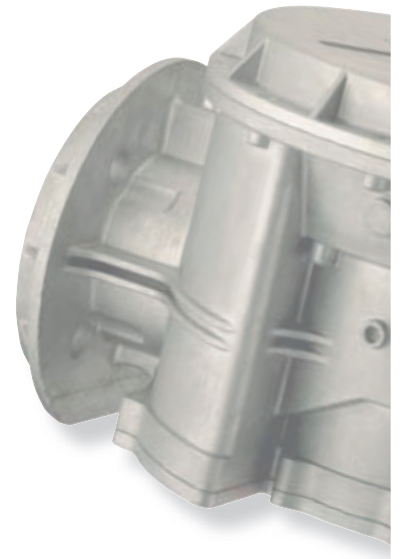
---

GAS GOVERNOR 2" – Pmax 5 bar p. 9

---

GAS GOVERNOR DN65, DN80, DN100 - Pmax 5 bar p. 11

---



**GAS GOVERNOR ½", ¾", 1" – Pmax 5 bar**

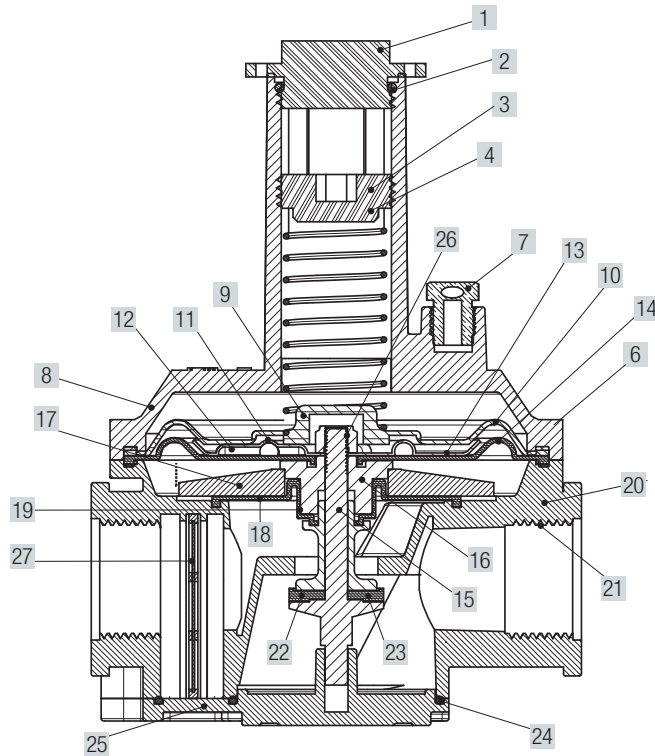


Code	Description	Dimension	Pmax
<b>RG015-5B</b>	Gas Governor	½"	5 bar
<b>RG020-5B</b>	Gas Governor	¾"	5 bar
<b>RG025-5B</b>	Gas Governor	1"	5 bar
<b>RGD25-5B</b>	Gas Governor	DN25	5 bar
<b>RG015-FT-5B</b>	Gas Governor with filter	½"	5 bar
<b>RG020-FT-5B</b>	Gas Governor with filter	¾"	5 bar
<b>RG025-FT-5B</b>	Gas Governor with filter	1"	5 bar
<b>RGD25-FT-5B</b>	Gas Governor with filter	DN25	5 bar
<b>RG015-5B-TPIO</b>	Gas Governor with test point in/out	½"	5 bar
<b>RG020-5B-TPIO</b>	Gas Governor with test point in/out	¾"	5 bar
<b>RG025-5B-TPIO</b>	Gas Governor with test point in/out	1"	5 bar
<b>RGD25-5B-TPIO</b>	Gas Governor with test point in/out	DN25	5 bar
<b>RG015-FT-5B-TPIO</b>	Gas Governor with filter and test point in/out	½"	5 bar
<b>RG020-FT-5B-TPIO</b>	Gas Governor with filter and test point in/out	¾"	5 bar
<b>RG025-FT-5B-TPIO</b>	Gas Governor with filter and test point in/out	1"	5 bar
<b>RGD25-FT-5B-TPIO</b>	Gas Governor with filter and test point in/out	DN25	5 bar

**TECHNICAL FEATURES**

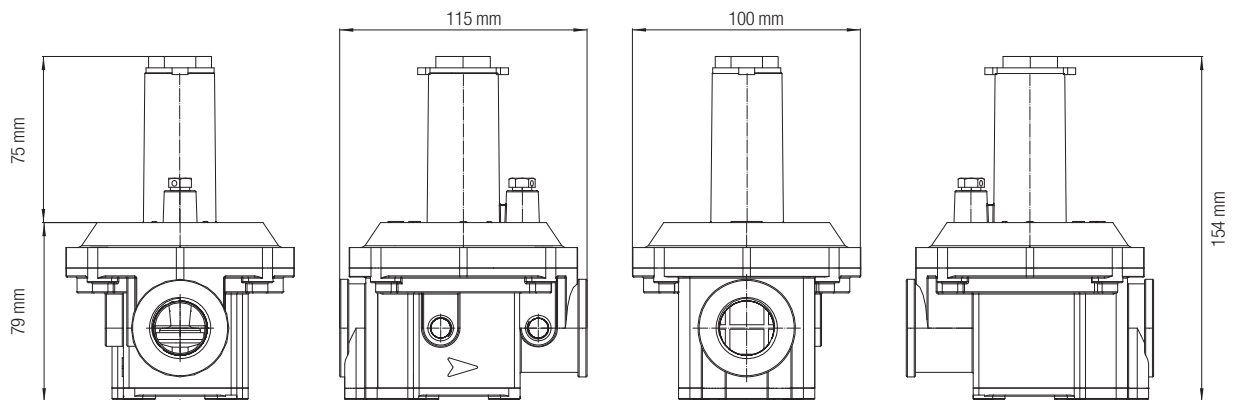
<b>Pmax</b>	inlet max – 5 bar
<b>Setting outlet</b>	6 – 480 mbar – Standard spring supplied 10 – 27 mbar – Other spring on request – Range as per below table
<b>Filtering</b>	≤ 50µm –
<b>Inlet - Outlet Connection</b>	Thread gas ½", ¾", 1" - ISO 228 DN25 - Sliding Aluminium flange PN10
<b>Test point</b>	1/8" NPT
<b>Working Temperature</b>	- 20 °C – + 60 °C
<b>Use</b>	Not aggressive gases of three families – Natural Gas – LPG – Town Gas
<b>Approval</b>	UNI EN 88-2:2008 / PED / EAC
<b>Materials:</b>	
<b>Complete Body</b>	Die – Cast Aluminium Gd – AlSi12Cu - EN AB 46100
<b>Diaphragms</b>	NBR 60Sh – DvGW EN 549 - reinforced diaphragm
<b>Plastic components</b>	Yellow POM / Pa 66 + 25% Gf

Code:	Color	Range mbar
<b>SPY1-12</b>	Yellow	6 - 22 mbar
<b>SPN1-12</b>	Neutral	10 - 27 mbar
<b>SPR1-12</b>	Red	28 - 70 mbar
<b>SPG1 -12</b>	Green	70 - 280 mbar
<b>SPBR1-12</b>	Brown	220- 480 mbar



1	Seal cap
2	O ring
3	Spring compressor
4	Washer
6	Screws
7	Vent cap
8	Upper cover
9	Plastic Washer
10	Safety diaphragm
11	Calibrated nozzle
12	Washer
13	Disc
14	Compensation diaphragm

15	Shaft
16	Upper bush
17	Disc
18	Working diaphragm
19	Lower bush
20	Body
21	Sensing tube
22	Seal washer
23	Plastic ring
24	Gasket
25	Cover
26	Nut
27	Filter cartridge



Dimension	1/2"	3/4"	1"
WEIGHT (kgs)	0,720	0,688	0,663



## GAS GOVERNOR ½", ¾", 1" - High Capacity - 5 bar



Code	Description	Dimension	Pmax
RG015-HC-5B	Gas Governor	½"	5 bar
RG020-HC-5B	Gas Governor	¾"	5 bar
RG025-HC-5B	Gas Governor	1"	5 bar
RGD25-HC-5B	Gas Governor	DN25	5 bar
RG015-HC-FT-5B	Gas Governor with filter	½"	5 bar
RG020-HC-FT-5B	Gas Governor with filter	¾"	5 bar
RG025-HC-FT-5B	Gas Governor with filter	1"	5 bar
RGD25-HC-FT-5B	Gas Governor with filter	DN25	5 bar
RG015-HC-5B-TPIO	Gas Governor with test point in/out	½"	5 bar
RG020-HC-5B-TPIO	Gas Governor with test point in/out	¾"	5 bar
RG025-HC-5B-TPIO	Gas Governor with test point in/out	1"	5 bar
RGD25-HC-5B-TPIO	Gas Governor with test point in/out	DN25	5 bar
RG015-HC-FT-5B-TPIO	Gas Governor with filter and test point in/out	½"	5 bar
RG020-HC-FT-5B-TPIO	Gas Governor with filter and test point in/out	¾"	5 bar
RG025-HC-FT-5B-TPIO	Gas Governor with filter and test point in/out	1"	5 bar
RGD25-HC-FT-5B-TPIO	Gas Governor with filter and test point in/out	DN25	5 bar

### TECHNICAL FEATURES

**Pmax** inlet max – 5 bar

**Setting outlet** 6 – 480 mbar – Standard spring supplied 10 – 27 mbar – Other spring on request – Range as per below table

**Filtering** ≤ 50µm –

**Inlet - Outlet Connection** Thread gas ½", ¾", 1" - ISO 228  
DN25 - Sliding Aluminium flange PN10

**Test point** 1/8" NPT

**Working Temperature** - 20 °C – + 60 °C

**Use** Not aggressive gases of three families – Natural Gas – LPG – Town Gas

**Approval** UNI EN 88-2:2008 / PED / EAC

#### Materials:

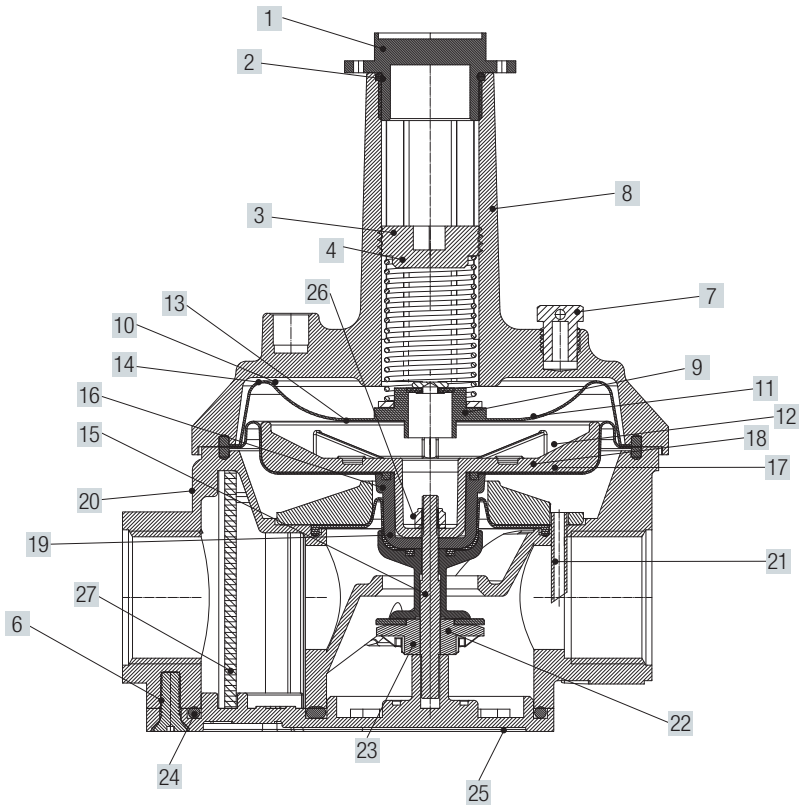
**Complete Body** Die – Cast Aluminium Gd – AlSi12Cu - EN AB 46100

**Diaphragms** NBR 60Sh – DvGW EN 549 - reinforced diaphragm

**Plastic components** Yellow POM / Pa 66 + 25% Gf

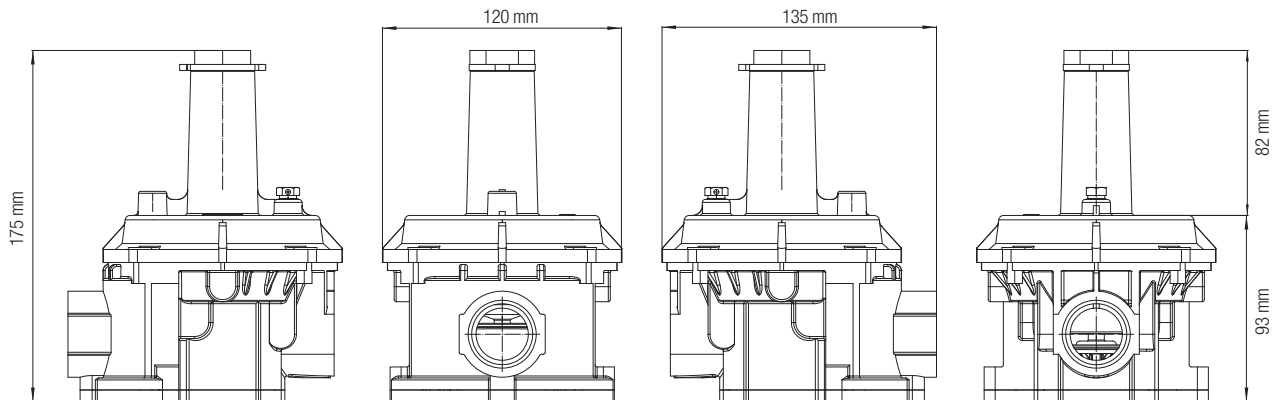
**Code:** **Color** **Range mbar**

SPY1-12HC	Yellow	6 - 22 mbar
SPN1-12HC	Neutral	10 - 27 mbar
SPR1-12HC	Red	28 - 70 mbar
SPG1-12HC	Green	70 - 280 mbar
SPBR2-12HC	Brown	220 - 480 mbar



1	Seal cap
2	O ring
3	Spring compressor
4	Washer
6	Screws
7	Vent cap
8	Upper cover
9	Plastic Washer
10	Safety diaphragm
11	Calibrated nozzle
12	Washer
13	Disc
14	Compensation diaphragm

15	Shaft
16	Upper bush
17	Disc
18	Working diaphragm
19	Lower bush
20	Body
21	Sensing tube
22	Seal washer
23	Plastic ring
24	Gasket
25	Cover
26	Nut
27	Filter cartridge



Dimension	1/2"	3/4"	1"
WEIGHT (kgs)	0,980	0,955	0,915

**GAS GOVERNOR 1 ¼", 1 ½" – Pmax 5 bar**



Code	Description	Dimension	Pmax
<b>RG032-5B</b>	Gas Governor	1 ¼"	5 bar
<b>RG040-5B</b>	Gas Governor	1 ½"	5 bar
<b>RGD32-5B</b>	Gas Governor	DN32	5 bar
<b>RGD40-5B</b>	Gas Governor	DN40	5 bar
<b>RG032-FT-5B</b>	Gas Governor with filter	1 ¼"	5 bar
<b>RG040-FT-5B</b>	Gas Governor with filter	1 ½"	5 bar
<b>RGD32-FT-5B</b>	Gas Governor with filter	DN32	5 bar
<b>RGD40-FT-5B</b>	Gas Governor with filter	DN40	5 bar
<b>RG032-5B-TPIO</b>	Gas Governor with test point in/out	1 ¼"	5 bar
<b>RG040-5B-TPIO</b>	Gas Governor with test point in/out	1 ½"	5 bar
<b>RGD32-5B-TPIO</b>	Gas Governor with test point in/out	DN32	5 bar
<b>RGD40-5B-TPIO</b>	Gas Governor with test point in/out	DN40	5 bar
<b>RG032-FT-5B-TPIO</b>	Gas Governor with filter test point in/out	1 ¼"	5 bar
<b>RG040-FT-5B-TPIO</b>	Gas Governor with filter test point in/out	1 ½"	5 bar
<b>RGD32-FT-5B-TPIO</b>	Gas Governor with filter test point in/out	DN32	5 bar
<b>RGD40-FT-5B-TPIO</b>	Gas Governor with filter test point in/out	DN40	5 bar

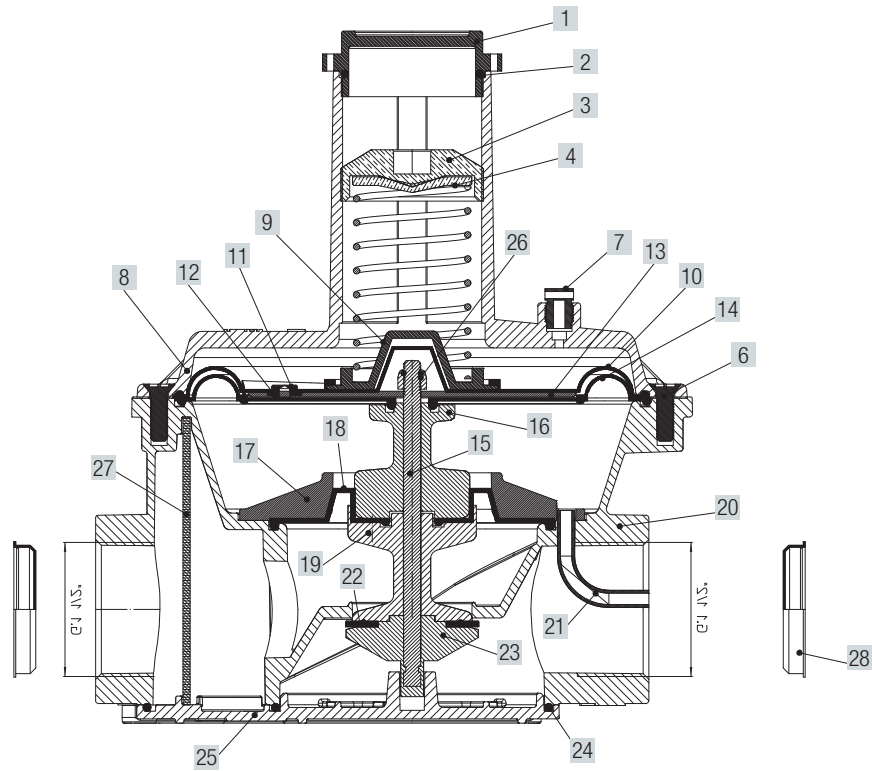
**TECHNICAL FEATURES**

<b>Pmax</b>	inlet max – 5 bar
<b>Setting outlet</b>	6 – 480 mbar – Standard spring supplied 10 – 27 mbar – Other spring on request – Range as per below table
<b>Filtering</b>	≤ 50µm – Viledon cartridge
<b>Inlet - Outlet Connection</b>	Thread gas 1 ¼" 1½" - ISO 228 DN32 DN40 - Sliding Aluminium flange PN10
<b>Test point</b>	1/8" NPT
<b>Working Temperature</b>	- 20 °C – + 60 °C
<b>Use</b>	Not aggressive gases of three families – Natural Gas – LPG – Town Gas
<b>Approval</b>	UNI EN 88-2:2008 / PED / EAC

**Materials:**

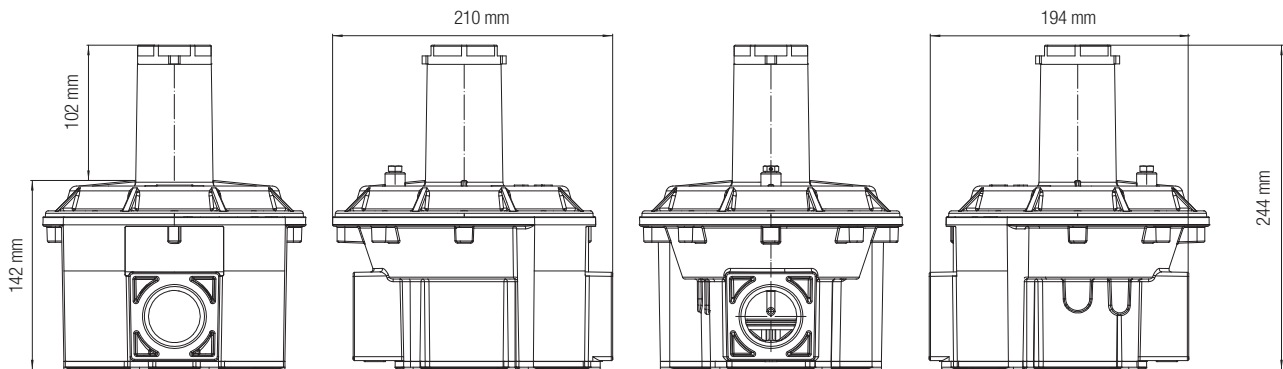
<b>Complete Body</b>	Die – Cast Aluminium Gd – AISi12Cu - EN AB 46100
<b>Diaphragms</b>	NBR 60Sh – DvGW EN 549 - reinforced diaphragm
<b>Plastic components</b>	White POM / Pa 66 + 25% Gf

Code:	Color	Range mbar
<b>SPY2-12</b>	Yellow	6 - 22 mbar
<b>SPN2-12</b>	Neutral	10 - 27 mbar
<b>SPR2-12</b>	Red	28 - 70 mbar
<b>SPBK2-12</b>	Black	60 - 130 mbar
<b>SPG2-12</b>	Green	120 - 300 mbar
<b>SPBR2-12</b>	Brown	220 - 480 mbar



1	Seal cap
2	O ring
3	Spring compressor
4	Washer
6	Screws
7	Vent cap
8	Upper cover
9	Plastic Washer
10	Safety diaphragm
11	Calibrated nozzle
12	Washer
13	Disc
14	Compensation diaphragm

15	Shaft
16	Upper bush
17	Disc
18	Working diaphragm
19	Lower bush
20	Body
21	Sensing tube
22	Seal washer
23	Plastic ring
24	Gasket
25	Cover
26	Nut
27	Filter cartridge
28	Screw cover



Dimension	1 1/4"	1 1/2"
WEIGHT (kgs)	3,140	3,060



**GAS GOVERNOR 2" – Pmax 5 bar**



Code	Description	Dimension	Pmax
<b>RG050-5B</b>	Gas Governor	2"	5 bar
<b>RGD50-5B</b>	Gas Governor	DN50	5 bar
<b>RG050-FT-5B</b>	Gas Governor with filter	2"	5 bar
<b>RGD50-FT-5B</b>	Gas Governor with filter	DN50	5 bar
<b>RG050-5B-TPIO</b>	Gas Governor with test point in/out	2"	5 bar
<b>RGD50-5B-TPIO</b>	Gas Governor with test point in/out	DN50	5 bar
<b>RG050-FT-5B-TPIO</b>	Gas Governor with filter and test point in/out	2"	5 bar
<b>RGD50-FT-5B-TPIO</b>	Gas Governor with filter and test point in/out	DN50	5 bar

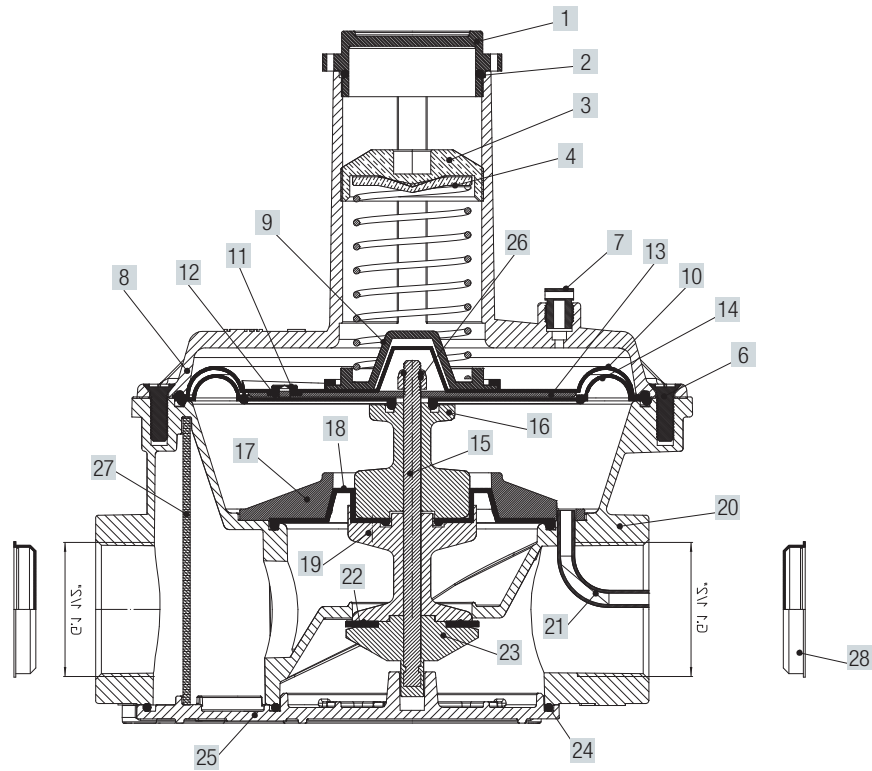
**TECHNICAL FEATURES**

<b>Pmax</b>	inlet max – 5 bar
<b>Setting outlet</b>	6 – 480 mbar – Standard spring supplied 10 – 27 mbar – Other spring on request – Range as per below table
<b>Filtering</b>	≤ 50µm – Viledon cartridge
<b>Inlet - Outlet Connection</b>	Thread gas 2" - ISO 228 DN50 - Sliding Aluminium flange PN10
<b>Test point</b>	1/8" NPT
<b>Working Temperature</b>	- 20 °C – + 60 °C
<b>Use</b>	Not aggressive gases of three families – Natural Gas – LPG – Town Gas
<b>Approval</b>	UNI EN 88-2:2008 / PED / EAC

**Materials:**

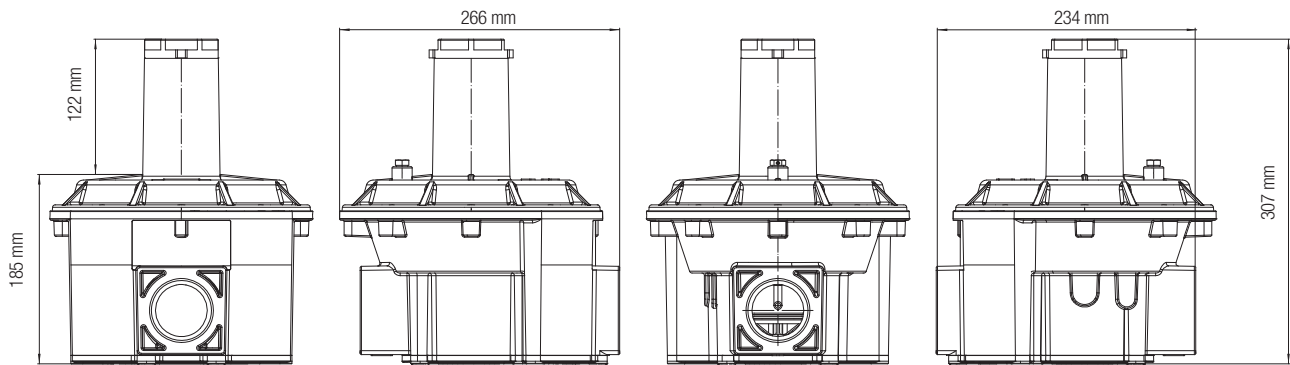
<b>Complete Body</b>	Die – Cast Aluminium Gd – AlSi12Cu - EN AB 46100
<b>Diaphragms</b>	NBR 60Sh – DvGW EN 549 - reinforced diaphragm
<b>Plastic components</b>	White POM / Pa 66 + 25% Gf

Code:	Color	Range mbar
<b>SPY3-12</b>	Yellow	6 - 22 mbar
<b>SPN3-12</b>	Neutral	10 - 27 mbar
<b>SPR3-12</b>	Red	28 - 70 mbar
<b>SPBK3-12</b>	Black	60 - 130 mbar
<b>SPG3-12</b>	Green	120 - 300 mbar
<b>SPBR3-12</b>	Brown	220 - 480 mbar



- 1 Seal cap
- 2 O ring
- 3 Spring compressor
- 4 Washer
- 6 Screws
- 7 Vent cap
- 8 Upper cover
- 9 Plastic Washer
- 10 Safety diaphragm
- 11 Calibrated nozzle
- 12 Washer
- 13 Disc
- 14 Compensation diaphragm

- 15 Shaft
- 16 Upper bush
- 17 Disc
- 18 Working diaphragm
- 19 Lower bush
- 20 Body
- 21 Sensing tube
- 22 Seal washer
- 23 Plastic ring
- 24 Gasket
- 25 Cover
- 26 Nut
- 27 Filter cartridge
- 28 Screw cover



Dimension	2"
WEIGHT (kgs)	5,8

## GAS GOVERNOR DN65, DN80, DN100 - Pmax 5 bar



Code	Description	Dimension	Pmax
<b>RGD65-5B</b>	Gas Governor	DN65	5 bar
<b>RGD80-5B</b>	Gas Governor	DN80	5 bar
<b>RGD100-5B</b>	Gas Governor	DN100	5 bar
<b>RGD65-FT-5B</b>	Gas Governor with filter	DN65	5 bar
<b>RGD80-FT-5B</b>	Gas Governor with filter	DN80	5 bar
<b>RGD100-FT-5B</b>	Gas Governor with filter	DN100	5 bar
<b>RGD65-5B-TPIO</b>	Gas Governor with test point in/out	DN65	5 bar
<b>RGD80-5B-TPIO</b>	Gas Governor with test point in/out	DN80	5 bar
<b>RGD100-5B-TPIO</b>	Gas Governor with test point in/out	DN100	5 bar
<b>RGD65-FT-5B-TPIO</b>	Gas Governor with filter and test point in/out	DN65	5 bar
<b>RGD80-FT-5B-TPIO</b>	Gas Governor with filter and test point in/out	DN80	5 bar
<b>RGD100-FT-5B-TPIO</b>	Gas Governor with filter and test point in/out	DN100	5 bar

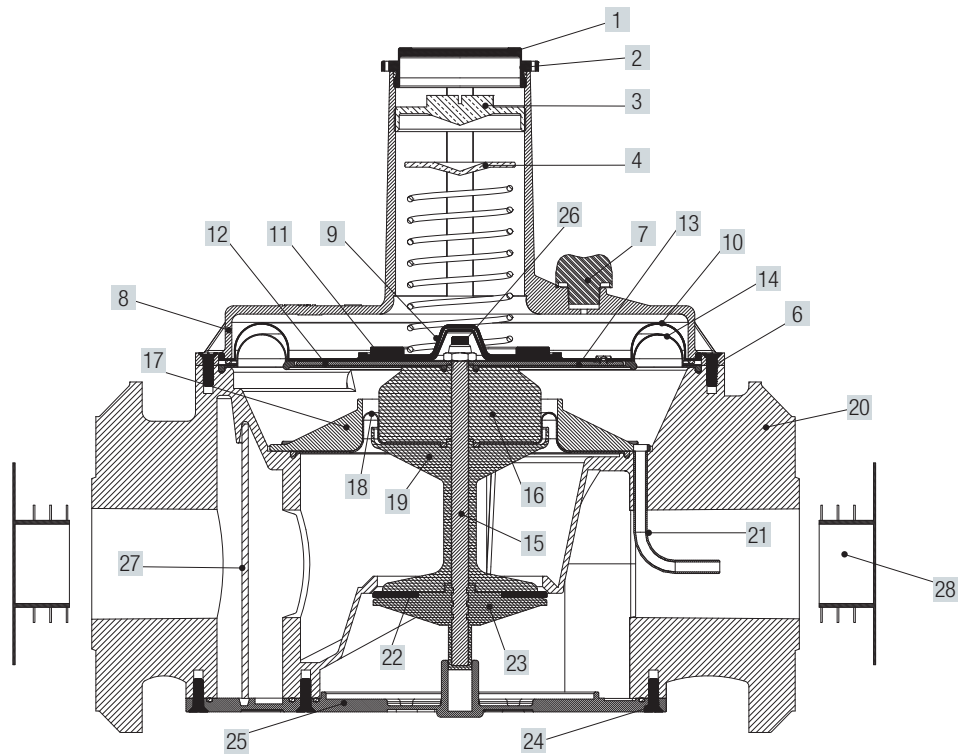
### TECHNICAL FEATURES

<b>Pmax</b>	inlet max – 5 bar
<b>Setting outlet</b>	10 – 300 mbar – Standard spring supplied 10 – 27 mbar – Other spring on request
<b>Filtering</b>	≤ 50µm – Viledon cartridge
<b>Inlet - Outlet Connection</b>	Flanged connection DN65 DN80 - DN100 - PN16
<b>Test point</b>	Inlet / outlet on request – Test point 1/8" NPT
<b>Working Temperature</b>	- 20 °C – + 60 °C
<b>Use</b>	Not aggressive gases of three families – Natural Gas – LPG – Town Gas
<b>Approval</b>	UNI EN 88-2:2008 / PED / EAC

### Materials:

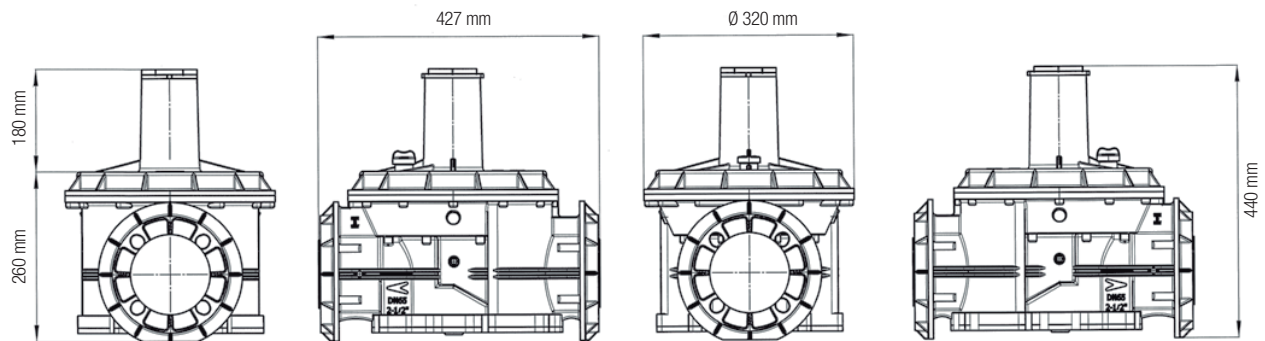
<b>Complete Body</b>	Die – Cast Aluminium Gd – AlSi12Cu - EN AB 46100
<b>Diaphragms</b>	NBR 60Sh – DvGW EN 549 - reinforced diaphragm
<b>Plastic components</b>	White POM / Pa 66 + 25% Gf

Spring Range:	Color	Range mbar
<b>SPY4-12</b>	Yellow	6 - 22 mbar
<b>SPN4-12</b>	Neutral	10 - 27 mbar
<b>SPR4-12</b>	Red	28 - 70 mbar
<b>SPBK4-12</b>	Black	60 - 130 mbar



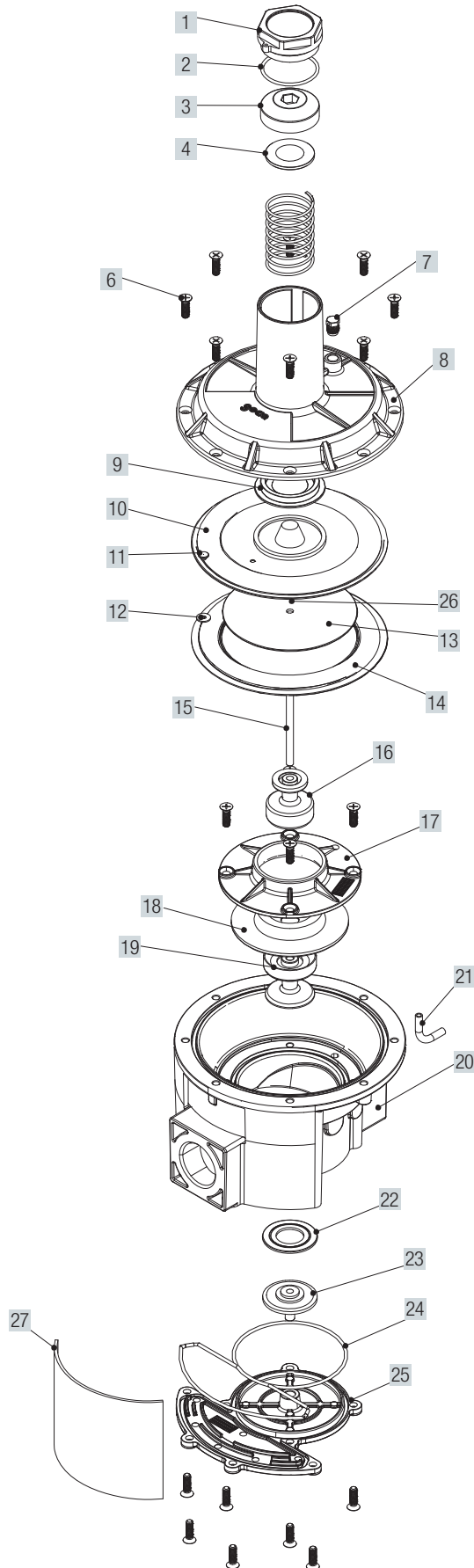
- 1** Seal cap
- 2** O-Ring
- 3** Spring compressor
- 4** Washer
- 6** Screws
- 7** Vent cap
- 8** Upper cover
- 9** Plastic Washer
- 10** Safety diaphragm
- 11** Calibrated nozzle
- 12** Washer
- 13** Disc
- 14** Compensation diaphragm

- 15** Shaft
- 16** Upper bush
- 17** Disc
- 18** Working diaphragm
- 19** Lower bush
- 20** Body
- 21** Sensing tube
- 22** Seal washer
- 23** Plastic ring
- 24** Gasket
- 25** Cover
- 26** Nut
- 27** Filter cartridge
- 28** Screw cover



Dimension	DN65	DN80	DN100
WEIGHT (kgs)	16	15,3	14,6

ASSEMBLY OVERVIEW



1	Seal cap
2	O ring
3	Spring compressor
4	Washer
6	Screws
7	Vent cap
8	Upper cover
9	Plastic Washer
10	Safety diaphragm
11	Calibrated nozzle
12	Washer
13	Disc
14	Compensation diaphragm
15	Shaft
16	Upper bush
17	Disc
18	Working diaphragm
19	Lower bush
20	Body
21	Sensing tube
22	Seal washer
23	Plastic ring
24	Gasket
25	Cover
26	Nut
27	Filter cartridge



## SPRINGS RANGE



### White spring – Range 5 – 14 mbar

#### Gas governor pmax 500 mbar

<b>SPW1-5</b>	RG015 - RG020 - RG025
<b>SPW2-5</b>	RG032 - RG040
<b>SPW3-5</b>	RG050
<b>SPW4-5</b>	RGD65 - RGD80 - RGD100

#### Gas governor 1 bar – 2 bar

<b>SPW1 – 12</b>	RG015 - 1B/2B – RG020 - 1B/2B – RG025 - 1B/2B
<b>SPW2 – 12</b>	RG032 - 1B/2B – RG040 - 1B/2B
<b>SPW3 – 12</b>	RG050 - 1B/2B
<b>SPW4 – 12</b>	RGD65 - 1B/2B – RGD80 - 1B/2B – RGD100 - 1B/2B

### Yellow spring – Range 6 – 22 mbar

#### Gas governor pmax 500 mbar

<b>SPY1-5</b>	RG015 - RG020 - RG025
<b>SPY2-5</b>	RG032 - RG040
<b>SPY3-5</b>	RG050
<b>SPY4-5</b>	RGD65 - RGD80 - RGD100

#### Gas governor 1 bar – 2 bar

<b>SPY1 – 12</b>	RG015 - 1B/2B – RG020 - 1B/2B – RG025 - 1B/2B
<b>SPY2 – 12</b>	RG032 - 1B/2B – RG040 - 1B/2B
<b>SPY3 – 12</b>	RG050 - 1B/2B
<b>SPY4 – 12</b>	RGD65 - 1B/2B – RGD80 - 1B/2B – RGD100 - 1B/2B

### Neutral spring –Range 10 – 27 mbar (Standard spring)

#### Gas governor pmax 500 mbar

<b>SPN1-5</b>	RG015 - RG020 - RG025
<b>SPN2-5</b>	RG032 - RG040
<b>SPN3-5</b>	RG050
<b>SPN4-5</b>	RGD65 - RGD80 - RGD100

#### Gas governor 1 bar – 2 bar

<b>SPN1 – 12</b>	RG015 - 1B/2B – RG020 - 1B/2B – RG025 - 1B/2B
<b>SPN2 – 12</b>	RG032 - 1B/2B – RG040 - 1B/2B
<b>SPN3 – 12</b>	RG050 - 1B/2B
<b>SPN4 – 12</b>	RGD65 - 1B/2B – RGD80 - 1B/2B – RGD100 - 1B/2B



### Red spring –Range 28 – 70 mbar

#### Gas governor pmax 500 mbar

<b>SPR1-5</b>	RG015 - RG020 - RG025
<b>SPR2-5</b>	RG032 - RG040
<b>SPR3-5</b>	RG050
<b>SPR4-5</b>	RGD65 - RGD80 - RGD100

#### Gas governor 1 bar – 2 bar

<b>SPR1 – 12</b>	RG015 - 1B/2B – RG020 - 1B/2B – RG025 - 1B/2B
<b>SPR2 – 12</b>	RG032 - 1B/2B – RG040 - 1B/2B
<b>SPR3 – 12</b>	RG050 - 1B/2B
<b>SPR4 – 12</b>	RGD65 - 1B/2B – RGD80 - 1B/2B – RGD100 - 1B/2B

### Black spring – Range 60 – 130 mbar

#### Gas governor pmax 500 mbar

<b>SPBK1-5</b>	RG015 - RG020 - RG025
<b>SPBK2-5</b>	RG032 - RG040
<b>SPBK3-5</b>	RG050
<b>SPBK4-5</b>	RGD65 - RGD80 - RGD100

#### Gas governor 1 bar – 2 bar

<b>SPBK2 – 12</b>	RG032 - 1B/2B – RG040 - 1B/2B
<b>SPBK3 – 12</b>	RG050 - 1B/2B
<b>SPBK4 – 12</b>	RGD65 - 1B/2B – RGD80 - 1B/2B – RGD100 - 1B/2B

### Blue spring – Range 120 – 300 mbar

#### Gas governor pmax 500 mbar

<b>SPB1-5</b>	RG015 - RG020 - RG025
<b>SPB2-5</b>	RG032 - RG040
<b>SPB3-5</b>	RG050
<b>SPB4-5</b>	RGD65 - RGD80 - RGD100

Others range on request

**GAS GOVERNORS - Standard version**



**Gas Governor - Pmax 500 mbar**

Code	Description	Dimension	Pmax
<b>RG015</b>	Gas Governor	½"	500 mbar
<b>RG020</b>	Gas Governor	¾"	500 mbar
<b>RG025</b>	Gas Governor	1"	500 mbar
<b>RGD25</b>	Gas Governor	DN25	500 mbar
<b>RG015-FT</b>	Gas Governor with filter	½"	500 mbar
<b>RG020-FT</b>	Gas Governor with filter	¾"	500 mbar
<b>RG025-FT</b>	Gas Governor with filter	1"	500 mbar
<b>RGD25-FT</b>	Gas Governor with filter	DN25	500 mbar

Code	Description	Dimension	Pmax
<b>RG015-HC</b>	Gas Governor	½"	500 mbar
<b>RG020-HC</b>	Gas Governor	¾"	500 mbar
<b>RG025-HC</b>	Gas Governor	1"	500 mbar
<b>RGD25-HC</b>	Gas Governor	DN25	500 mbar
<b>RG015-HC-FT</b>	Gas Governor with filter	½"	500 mbar
<b>RG020-HC-FT</b>	Gas Governor with filter	¾"	500 mbar
<b>RG025-HC-FT</b>	Gas Governor with filter	1"	500 mbar
<b>RGD25-HC-FT</b>	Gas Governor with filter	DN25	500 mbar

Code	Description	Dimension	Pmax
<b>RG032</b>	Gas Governor	1 ¼"	500 mbar
<b>RG040</b>	Gas Governor	1 ½"	500 mbar
<b>RGD32</b>	Gas Governor	DN32	500 mbar
<b>RGD40</b>	Gas Governor	DN40	500 mbar
<b>RG032-FT</b>	Gas Governor with filter	1 ¼"	500 mbar
<b>RG040-FT</b>	Gas Governor with filter	1 ½"	500 mbar
<b>RGD32-FT</b>	Gas Governor with filter	DN32	500 mbar
<b>RGD40-FT</b>	Gas Governor with filter	DN40	500 mbar

Code	Description	Dimension	Pmax
<b>RG050</b>	Gas Governor	2"	500 mbar
<b>RGD50</b>	Gas Governor	DN50	500 mbar
<b>RG050-FT</b>	Gas Governor with filter	2"	500 mbar
<b>RGD50-FT</b>	Gas Governor with filter	DN50	500 mbar

Code	Description	Dimension	Pmax
<b>RGD65</b>	Gas Governor	DN65	500 mbar
<b>RGD80</b>	Gas Governor	DN80	500 mbar
<b>RGD100</b>	Gas Governor	DN100	500 mbar
<b>RGD65-FT</b>	Gas Governor with filter	DN65	500 mbar
<b>RGD80-FT</b>	Gas Governor with filter	DN80	500 mbar
<b>RGD100-FT</b>	Gas Governor with filter	DN100	500 mbar

**Gas Governor - Pmax 1 bar**

Code	Description	Dimension	Pmax
RG015-1B	Gas Governor	½"	1 bar
RG020-1B	Gas Governor	¾"	1 bar
RG025-1B	Gas Governor	1"	1 bar
RGD25-1B	Gas Governor	DN25	1 bar

RG015-FT-1B	Gas Governor with filter	½"	1 bar
RG020-FT-1B	Gas Governor with filter	¾"	1 bar
RG025-FT-1B	Gas Governor with filter	1"	1 bar
RGD25-FT-1B	Gas Governor with filter	DN25	1 bar

Code	Description	Dimension	Pmax
RG015-HC-1B	Gas Governor	½"	1 bar
RG020-HC-1B	Gas Governor	¾"	1 bar
RG025-HC-1B	Gas Governor	1"	1 bar
RGD25-HC-1B	Gas Governor	DN25	1 bar

RG015-HC-FT-1B	Gas Governor with filter	½"	1 bar
RG020-HC-FT-1B	Gas Governor with filter	¾"	1 bar
RG025-HC-FT-1B	Gas Governor with filter	1"	1 bar
RGD25-HC-FT-1B	Gas Governor with filter	DN25	1 bar

Code	Description	Dimension	Pmax
RG032-1B	Gas Governor	1 ¼"	1 bar
RG040-1B	Gas Governor	1 ½"	1 bar
RGD32-1B	Gas Governor	DN32	1 bar
RGD40-1B	Gas Governor	DN40	1 bar

RG032-FT-1B	Gas Governor with filter	1 ¼"	1 bar
RG040-FT-1B	Gas Governor with filter	1 ½"	1 bar
RGD32-FT-1B	Gas Governor with filter	DN32	1 bar
RGD40-FT-1B	Gas Governor with filter	DN40	1 bar

Code	Description	Dimension	Pmax
RG050-1B	Gas Governor	2"	1 bar
RGD50-1B	Gas Governor	DN50	1 bar
RG050-FT-1B	Gas Governor with filter	2"	1 bar
RGD50-FT-1B	Gas Governor with filter	DN50	1 bar

Code	Description	Dimension	Pmax
RGD65-1B	Gas Governor	DN65	1 bar
RGD80-1B	Gas Governor	DN80	1 bar
RGD100-1B	Gas Governor	DN100	1 bar

RGD65-FT-1B	Gas Governor with filter	DN65	1 bar
RGD80-FT-1B	Gas Governor with filter	DN80	1 bar
RGD100-FT-1B	Gas Governor with filter	DN100	1 bar

**Gas Governor - Pmax 2 bar**

Code	Description	Dimension	Pmax
RG015-2B	Gas Governor	½"	2 bar
RG020-2B	Gas Governor	¾"	2 bar
RG025-2B	Gas Governor	1"	2 bar
RGD25-2B	Gas Governor	DN25	2 bar

RG015-FT-2B	Gas Governor with filter	½"	2 bar
RG020-FT-2B	Gas Governor with filter	¾"	2 bar
RG025-FT-2B	Gas Governor with filter	1"	2 bar
RGD25-FT-2B	Gas Governor with filter	DN25	2 bar

Code	Description	Dimension	Pmax
RG015-HC-2B	Gas Governor	½"	2 bar
RG020-HC-2B	Gas Governor	¾"	2 bar
RG025-HC-2B	Gas Governor	1"	2 bar
RGD25-HC-2B	Gas Governor	DN25	2 bar

RG015-HC-FT-2B	Gas Governor with filter	½"	2 bar
RG020-HC-FT-2B	Gas Governor with filter	¾"	2 bar
RG025-HC-FT-2B	Gas Governor with filter	1"	2 bar
RGD25-HC-FT-2B	Gas Governor with filter	DN25	2 bar

Code	Description	Dimension	Pmax
RG032-2B	Gas Governor	1 ¼"	2 bar
RG040-2B	Gas Governor	1 ½"	2 bar
RGD32-2B	Gas Governor	DN32	2 bar
RGD40-2B	Gas Governor	DN40	2 bar

RG032-FT-2B	Gas Governor with filter	1 ¼"	2 bar
RG040-FT-2B	Gas Governor with filter	1 ½"	2 bar
RGD32-FT-2B	Gas Governor with filter	DN32	2 bar
RGD40-FT-2B	Gas Governor with filter	DN40	2 bar

Code	Description	Dimension	Pmax
RG050-2B	Gas Governor	2"	2 bar
RGD50-2B	Gas Governor	DN50	2 bar
RG050-FT-2B	Gas Governor with filter	2"	2 bar
RGD50-FT-2B	Gas Governor with filter	DN50	2 bar

Code	Description	Dimension	Pmax
RGD65-2B	Gas Governor	DN65	2 bar
RGD80-2B	Gas Governor	DN80	2 bar
RGD100-2B	Gas Governor	DN100	2 bar

RGD65-FT-2B	Gas Governor with filter	DN65	2 bar
RGD80-FT-2B	Gas Governor with filter	DN80	2 bar
RGD100-FT-2B	Gas Governor with filter	DN100	2 bar

## GAS GOVERNORS - Standard version

### Gas Governor - Pmax 5 bar

Code	Description	Dimension	Pmax
<b>RG015-5B</b>	Gas Governor	½"	5 bar
<b>RG020-5B</b>	Gas Governor	¾"	5 bar
<b>RG025-5B</b>	Gas Governor	1"	5 bar
<b>RGD25-5B</b>	Gas Governor	DN25	5 bar
<b>RG015-FT-5B</b>	Gas Governor with filter	½"	5 bar
<b>RG020-FT-5B</b>	Gas Governor with filter	¾"	5 bar
<b>RG025-FT-5B</b>	Gas Governor with filter	1"	5 bar
<b>RGD25-FT-5B</b>	Gas Governor with filter	DN25	5 bar

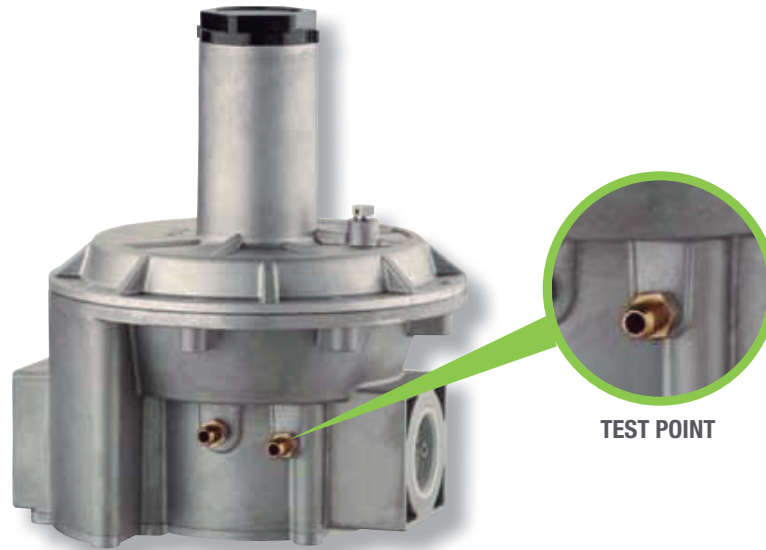
Code	Description	Dimension	Pmax
<b>RG015-HC-5B</b>	Gas Governor	½"	5 bar
<b>RG020-HC-5B</b>	Gas Governor	¾"	5 bar
<b>RG025-HC-5B</b>	Gas Governor	1"	5 bar
<b>RGD25-HC-5B</b>	Gas Governor	DN25	5 bar
<b>RG015-HC-FT-5B</b>	Gas Governor with filter	½"	5 bar
<b>RG020-HC-FT-5B</b>	Gas Governor with filter	¾"	5 bar
<b>RG025-HC-FT-5B</b>	Gas Governor with filter	1"	5 bar
<b>RGD25-HC-FT-5B</b>	Gas Governor with filter	DN25	5 bar

Code	Description	Dimension	Pmax
<b>RG032-5B</b>	Gas Governor	1 ¼"	5 bar
<b>RG040-5B</b>	Gas Governor	1 ½"	5 bar
<b>RGD32-5B</b>	Gas Governor	DN32	5 bar
<b>RGD40-5B</b>	Gas Governor	DN40	5 bar
<b>RG032-FT-5B</b>	Gas Governor with filter	1 ¼"	5 bar
<b>RG040-FT-5B</b>	Gas Governor with filter	1 ½"	5 bar
<b>RGD32-FT-5B</b>	Gas Governor with filter	DN32	5 bar
<b>RGD40-FT-5B</b>	Gas Governor with filter	DN40	5 bar

Code	Description	Dimension	Pmax
<b>RG050-5B</b>	Gas Governor	2"	5 bar
<b>RGD50-5B</b>	Gas Governor	DN50	5 bar
<b>RG050-FT-5B</b>	Gas Governor with filter	2"	5 bar
<b>RGD50-FT-5B</b>	Gas Governor with filter	DN50	5 bar

Code	Description	Dimension	Pmax
<b>RGD65-5B</b>	Gas Governor	DN65	5 bar
<b>RGD80-5B</b>	Gas Governor	DN80	5 bar
<b>RGD100-5B</b>	Gas Governor	DN100	5 bar
<b>RGD65-FT-5B</b>	Gas Governor with filter	DN65	5 bar
<b>RGD80-FT-5B</b>	Gas Governor with filter	DN80	5 bar
<b>RGD100-FT-5B</b>	Gas Governor with filter	DN100	5 bar

## GAS GOVERNORS - TPIO code - Test point input / output



### Gas Governor - Pmax 500 mbar

Code	Description	Dimension	Pmax
<b>RG015-TPIO</b>	Gas Governor with test point in/out	½"	500 mbar
<b>RG020-TPIO</b>	Gas Governor with test point in/out	¾"	500 mbar
<b>RG025-TPIO</b>	Gas Governor with test point in/out	1"	500 mbar
<b>RGD25-TPIO</b>	Gas Governor with test point in/out	DN25	500 mbar
<b>RG015-FT-TPIO</b>	Gas Governor with filter and test point in /out	½"	500 mbar
<b>RG020-FT-TPIO</b>	Gas Governor with filter and test point in /out	¾"	500 mbar
<b>RG025-FT-TPIO</b>	Gas Governor with filter and test point in /out	1"	500 mbar
<b>RGD25-FT-TPIO</b>	Gas Governor with filter and test point in /out	DN25	500 mbar

Code	Description	Dimension	Pmax
<b>RG015-HC-TPIO</b>	Gas Governor with test point in/out	½"	500 mbar
<b>RG020-HC-TPIO</b>	Gas Governor with test point in/out	¾"	500 mbar
<b>RG025-HC-TPIO</b>	Gas Governor with test point in/out	1"	500 mbar
<b>RGD25-HC-TPIO</b>	Gas Governor with test point in/out	DN25	500 mbar
<b>RG015-HC-FT-TPIO</b>	Gas Governor with filter and test point in/out	½"	500 mbar
<b>RG020-HC-FT-TPIO</b>	Gas Governor with filter and test point in/out	¾"	500 mbar
<b>RG025-HC-FT-TPIO</b>	Gas Governor with filter and test point in/out	1"	500 mbar
<b>RGD25-HC-FT-TPIO</b>	Gas Governor with filter and test point in/out	DN25	500 mbar

Code	Description	Dimension	Pmax
<b>RG032-TPIO</b>	Gas Governor with test point in/out	1¼"	500 mbar
<b>RG040-TPIO</b>	Gas Governor with test point in/out	1½"	500 mbar
<b>RGD32-TPIO</b>	Gas Governor with test point in/out	DN32	500 mbar
<b>RGD40-TPIO</b>	Gas Governor with test point in/out	DN40	500 mbar
<b>RG032-FT-TPIO</b>	Gas Governor with filter and test point in/out	1¼"	500 mbar
<b>RG040-FT-TPIO</b>	Gas Governor with filter and test point in/out	1½"	500 mbar
<b>RGD32-FT-TPIO</b>	Gas Governor with filter and test point in/out	DN32	500 mbar
<b>RGD40-FT-TPIO</b>	Gas Governor with filter and test point in/out	DN32	500 mbar

Code	Description	Dimension	Pmax
<b>RG050-TPIO</b>	Gas Governor with test point in/out	2"	500 mbar
<b>RGD50-TPIO</b>	Gas Governor with test point in/out	DN50	500 mbar
<b>RG050-FT-TPIO</b>	Gas Governor with filter and test point in/out	2"	500 mbar
<b>RGD50-FT-TPIO</b>	Gas Governor with filter and test point in/out	DN50	500 mbar

Code	Description	Dimension	Pmax
<b>RGD65-TPIO</b>	Gas Governor with test point in/out	DN65	500 mbar
<b>RGD80-TPIO</b>	Gas Governor with test point in/out	DN80	500 mbar
<b>RGD100-TPIO</b>	Gas Governor with test point in/out	DN100	500 mbar
<b>RGD65-FT-TPIO</b>	Gas Governor with filter and test point in/out	DN65	500 mbar
<b>RGD80-FT-TPIO</b>	Gas Governor with filter and test point in/out	DN80	500 mbar
<b>RGD100-FT-TPIO</b>	Gas Governor with filter and test point in/out	DN100	500 mbar



## GAS GOVERNORS - TPIO code - Test point input / output

### Gas Governor - Pmax 1 bar

Code	Description	Dimension	Pmax
RG015-1B-TPIO	Gas Governor with test point in/out	½"	1 bar
RG020-1B-TPIO	Gas Governor with test point in/out	¾"	1 bar
RG025-1B-TPIO	Gas Governor with test point in/out	1"	1 bar
RGD25-1B-TPIO	Gas Governor with test point in/out	DN25	1 bar
RG015-FT-1B-TPIO	Gas Governor with filter and test point in/out	½"	1 bar
RG020-FT-1B-TPIO	Gas Governor with filter and test point in/out	¾"	1 bar
RG025-FT-1B-TPIO	Gas Governor with filter and test point in/out	1"	1 bar
RGD25-FT-1B-TPIO	Gas Governor with filter and test point in/out	DN25	1 bar

Code	Description	Dimension	Pmax
RG015-HC-1B-TPIO	Gas Governor with test point in/out	½"	1 bar
RG020-HC-1B-TPIO	Gas Governor with test point in/out	¾"	1 bar
RG025-HC-1B-TPIO	Gas Governor with test point in/out	1"	1 bar
RGD25-HC-1B-TPIO	Gas Governor with test point in/out	DN25	1 bar

Code	Description	Dimension	Pmax
RG015-HC-FT-1B-TPIO	Gas Governor with filter and test point in/out	½"	1 bar
RG020-HC-FT-1B-TPIO	Gas Governor with filter and test point in/out	¾"	1 bar
RG025-HC-FT-1B-TPIO	Gas Governor with filter and test point in/out	1"	1 bar
RGD25-HC-FT-1B-TPIO	Gas Governor with filter and test point in/out	DN25	1 bar

Code	Description	Dimension	Pmax
RG032-1B-TPIO	Gas Governor with test point in/out	1 ¼"	1 bar
RG040-1B-TPIO	Gas Governor with test point in/out	1 ½"	1 bar
RGD32-1B-TPIO	Gas Governor with test point in/out	DN32	1 bar
RGD40-1B-TPIO	Gas Governor with test point in/out	DN40	1 bar

Code	Description	Dimension	Pmax
RG032-FT-1B-TPIO	Gas Governor with filter and test point in/out	1 ¼"	1 bar
RG040-FT-1B-TPIO	Gas Governor with filter and test point in/out	1 ½"	1 bar
RGD32-FT-1B-TPIO	Gas Governor with filter and test point in/out	DN32	1 bar
RGD40-FT-1B-TPIO	Gas Governor with filter and test point in/out	DN40	1 bar

Code	Description	Dimension	Pmax
RG050-1B-TPIO	Gas Governor with test point in/out	2"	1 bar
RGD50-1B-TPIO	Gas Governor with test point in/out	DN50	1 bar
RG050-FT-1B-TPIO	Gas Governor with filter and test point in /out	2"	1 bar
RGD50-FT-1B-TPIO	Gas Governor with filter and test point in /out	DN50	1 bar

Code	Description	Dimension	Pmax
RGD65-1B-TPIO	Gas Governor with test point in/out	DN65	1 bar
RGD80-1B-TPIO	Gas Governor with test point in/out	DN80	1 bar
RGD100-1B-TPIO	Gas Governor with test point in/out	DN100	1 bar

Code	Description	Dimension	Pmax
RGD65-FT-1B-TPIO	Gas Governor with filter and test point in/out	DN65	1 bar
RGD80-FT-1B-TPIO	Gas Governor with filter and test point in/out	DN80	1 bar
RGD100-FT-1B-TPIO	Gas Governor with filter and test point in/out	DN100	1 bar

### Gas Governor - Pmax 2 bar

Code	Description	Dimension	Pmax
RG015-2B-TPIO	Gas Governor with test point in/out	½"	2 bar
RG020-2B-TPIO	Gas Governor with test point in/out	¾"	2 bar
RG025-2B-TPIO	Gas Governor with test point in/out	1"	2 bar
RGD25-2B-TPIO	Gas Governor with test point in/out	DN25	2 bar
RG015-FT-2B-TPIO	Gas Governor with filter and test point in/out	½"	2 bar
RG020-FT-2B-TPIO	Gas Governor with filter and test point in/out	¾"	2 bar
RG025-FT-2B-TPIO	Gas Governor with filter and test point in/out	1"	2 bar
RGD25-FT-2B-TPIO	Gas Governor with filter and test point in/out	DN25	2 bar

Code	Description	Dimension	Pmax
RG015-HC-2B-TPIO	Gas Governor with test point in/out	½"	2 bar
RG020-HC-2B-TPIO	Gas Governor with test point in/out	¾"	2 bar
RG025-HC-2B-TPIO	Gas Governor with test point in/out	1"	2 bar

Code	Description	Dimension	Pmax
RG015-HC-FT-2B-TPIO	Gas Governor with filter and test point in/out	½"	2 bar
RG020-HC-FT-2B-TPIO	Gas Governor with filter and test point in/out	¾"	2 bar
RG025-HC-FT-2B-TPIO	Gas Governor with filter and test point in/out	1"	2 bar

Code	Description	Dimension	Pmax
RG032-2B-TPIO	Gas Governor with test point in/out	1 ¼"	2 bar
RG040-2B-TPIO	Gas Governor with test point in/out	1 ½"	2 bar
RGD32-2B-TPIO	Gas Governor with test point in/out	DN32	2 bar
RGD40-2B-TPIO	Gas Governor with test point in/out	DN40	2 bar

Code	Description	Dimension	Pmax
RG032-FT-2B-TPIO	Gas Governor with filter test point in/out	1 ¼"	2 bar
RG040-FT-2B-TPIO	Gas Governor with filter test point in/out	1 ½"	2 bar
RGD32-FT-2B-TPIO	Gas Governor with filter test point in/out	DN32	2 bar
RGD40-FT-2B-TPIO	Gas Governor with filter test point in/out	DN40	2 bar

Code	Description	Dimension	Pmax
RG050-2B-TPIO	Gas Governor with test point in/out	2"	2 bar
RGD50-2B-TPIO	Gas Governor with test point in/out	DN50	2 bar
RG050-FT-2B-TPIO	Gas Governor with filter and test point in/out	2"	2 bar
RGD50-FT-2B-TPIO	Gas Governor with filter and test point in/out	DN50	2 bar

Code	Description	Dimension	Pmax
RGD65-2B-TPIO	Gas Governor with test point in/out	DN65	2 bar
RGD80-2B-TPIO	Gas Governor with test point in/out	DN80	2 bar
RGD100-2B-TPIO	Gas Governor with test point in/out	DN100	2 bar

Code	Description	Dimension	Pmax
RGD65-FT-2B-TPIO	Gas Governor with filter and test point in/out	DN65	2 bar
RGD80-FT-2B-TPIO	Gas Governor with filter and test point in/out	DN80	2 bar
RGD100-FT-2B-TPIO	Gas Governor with filter and test point in/out	DN100	2 bar

### Gas Governor - Pmax 5 bar

Code	Description	Dimension	Pmax
RG015-5B-TPIO	Gas Governor with test point in/out	½"	5 bar
RG020-5B-TPIO	Gas Governor with test point in/out	¾"	5 bar
RG025-5B-TPIO	Gas Governor with test point in/out	1"	5 bar
RGD25-5B-TPIO	Gas Governor with test point in/out	DN25	5 bar
RG015-FT-5B-TPIO	Gas Governor with filter and test point in/out	½"	5 bar
RG020-FT-5B-TPIO	Gas Governor with filter and test point in/out	¾"	5 bar
RG025-FT-5B-TPIO	Gas Governor with filter and test point in/out	1"	5 bar
RGD25-FT-5B-TPIO	Gas Governor with filter and test point in/out	DN25	5 bar

Code	Description	Dimension	Pmax
RG015-HC-5B-TPIO	Gas Governor with test point in/out	½"	5 bar
RG020-HC-5B-TPIO	Gas Governor with test point in/out	¾"	5 bar
RG025-HC-5B-TPIO	Gas Governor with test point in/out	1"	5 bar
RGD25-HC-5B-TPIO	Gas Governor with test point in/out	DN25	5 bar

RG015-HC-FT-5B-TPIO	Gas Governor with filter and test point in/out	½"	5 bar
RG020-HC-FT-5B-TPIO	Gas Governor with filter and test point in/out	¾"	5 bar
RG025-HC-FT-5B-TPIO	Gas Governor with filter and test point in/out	1"	5 bar
RG025-HC-FT-5B-TPIO	Gas Governor with filter and test point in/out	DN25	5 bar

Code	Description	Dimension	Pmax
RG032-5B-TPIO	Gas Governor with test point in/out	1 ¼"	5 bar
RG040-5B-TPIO	Gas Governor with test point in/out	1 ½"	5 bar
RGD32-5B-TPIO	Gas Governor with test point in/out	DN32	5 bar
RGD40-5B-TPIO	Gas Governor with test point in/out	DN40	5 bar
RG032-FT-5B-TPIO	Gas Governor with filter test point in/out	1 ¼"	5 bar
RG040-FT-5B-TPIO	Gas Governor with filter test point in/out	1 ½"	5 bar
RGD32-FT-5B-TPIO	Gas Governor with filter test point in/out	DN32	5 bar
RGD40-FT-5B-TPIO	Gas Governor with filter test point in/out	DN40	5 bar

Code	Description	Dimension	Pmax
RG050-5B-TPIO	Gas Governor with test point in/out	2"	5 bar
RGD50-5B-TPIO	Gas Governor with test point in/out	DN50	5 bar
RG050-FT-5B-TPIO	Gas Governor with filter and test point in/out	2"	5 bar
RGD50-FT-5B-TPIO	Gas Governor with filter and test point in/out	DN50	5 bar

Code	Description	Dimension	Pmax
RGD65-5B-TPIO	Gas Governor with test point in/out	DN65	5 bar
RGD80-5B-TPIO	Gas Governor with test point in/out	DN80	5 bar
RGD100-5B-TPIO	Gas Governor with test point in/out	DN100	5 bar
RGD65-FT-5B-TPIO	Gas Governor with filter and test point in/out	DN65	5 bar
RGD80-FT-5B-TPIO	Gas Governor with filter and test point in/out	DN80	5 bar
RGD100-FT-5B-TPIO	Gas Governor with filter and test point in/out	DN100	5 bar

## CODE DESCRIPTION

**RG015-FT-1B- TPIO**

①   ②   ③   ④   ⑤

<p>① GAS GOVERNOR: RG=Threaded connections RGD=Flanged connections</p>	<p>④ BAR: =500mbar -1B=1bar -2B=2bar -5B=5bar</p>	<p>② DIMENSIONS: 015 = 1/2" 020 = 3/4" 025= 1" 25= DN25 032= 1 1/4" 32= DN32 040= 1 1/2" 40= DN40 050= 2" 50= DN50 65 = DN65 80 = DN80 100 = DN100</p>
<p>③ OPTIONAL: -FT= With Filter</p>		
<p>⑤ TPIO: -Test point inlet /outlet</p>		

## PACKING DIMENSION

Code	Packaging Dimension (LxWxH) cm	Weight dimension (Kg)	Packaging
RG015 – RG020 – RG025	63x24x18	7,4	10 units
RG015-HC – RG020-HC – RG025HC	66x30x23	10	10 units
RG032 – RG040	22x20x26	3,4	1 unit
RG050	27x28x32	6	1 unit
RGD65 – RGD80 – RGD100	44x34x46	16,2 - 15,5 - 14,8	1 unit

## GENERAL DESCRIPTION

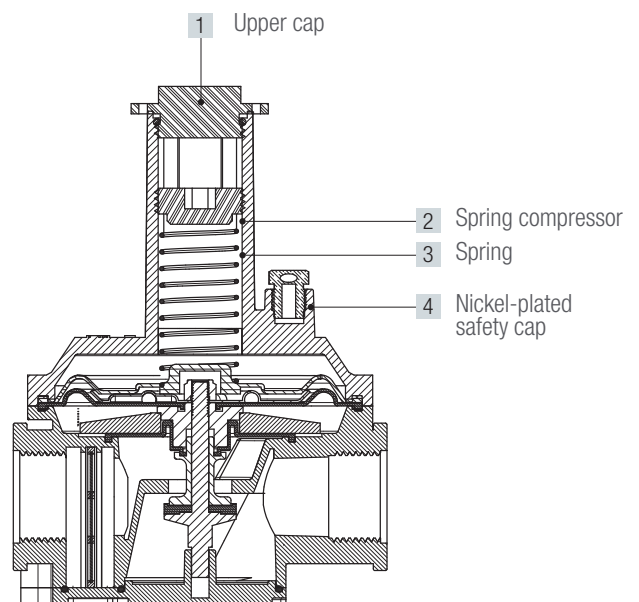
Verify that the installation is performed according to the particular law in force and according to the valid technical rules; Verify that the data indicated on the regulator's type plate, answer to the required terms from the instruments of combustion connected; Verify that regulator is installed according to the indications of this data sheet, and particularly: Verify the presence of an inlet and outlet stop valve; Verify the presence of a specific gas filter with suitable flow rate; Verify the correct assemblage position of governor.

To respect the direction of the flow as pointed out by the arrow on the governor.

For a correct assembly follow the mechanical diagram A. For any exhaust and/or vent pipes, remove the vent cap 1/4" or 1/2" (4) on the cover, using the union provided, connect 1/2" pipe, being careful to locate the outlet in a safe place

## PRESSURE SETTING

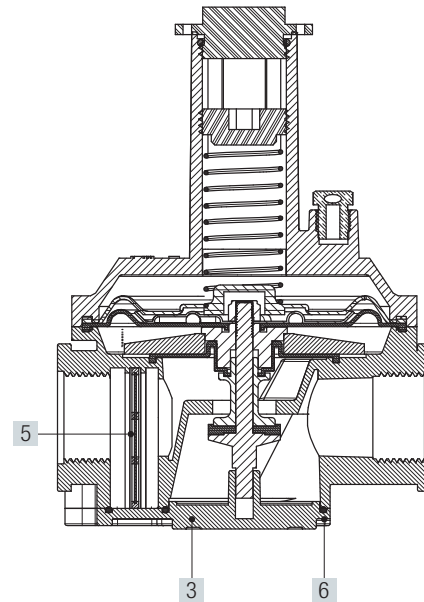
The possible varying of the setting is indicated in the plate. For increasing or decreasing, please unscrew the cap (1), turning clockwise the spring compressor (2) increase the pressure and counterclockwise to decrease it. When the adjustment is finished, secure cap (1) and seal it if necessary.



## MAINTENANCE

Close the inlet and outlet valves and slowly depressurize the governor, ASSURE that there is no pressure inside the governor, then remove the screws on the cover. pos. 6. Remove the cover pos. 3, remove the filter cartridge pos. 5 and replace it with the new one.

Place the new cartridge in its seat, and assure that the new cartridge fits perfectly inside the governor housing guide. CAREFULLY inspect the O-ring seal and replace it if necessary. Reassemble the cover, making sure that the cartridge fits perfectly in the cover seat, and tighten the screws crosswise. Pressurize the governor by SLOWLY open the inlet valve and check the seal around the cover and the screws, using foam or soapy water. After successful test, SLOWLY open the outlet valve.



## INSTALLATION AND POSITIONING

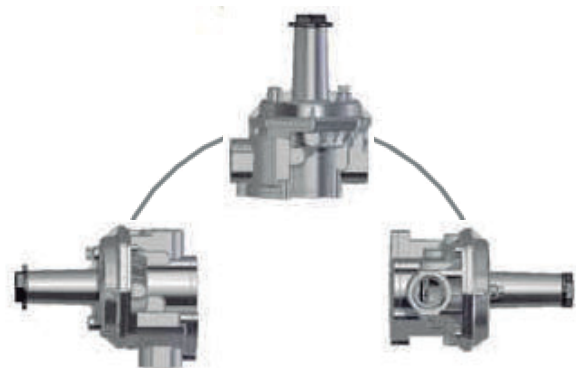
The governor gas regulator can be mounted in a vertical and horizontal position with a maximum angle of 90°.

Do not use the governor as a lever.

Check the equipment condition periodically.

Check the downstream pressure periodically.

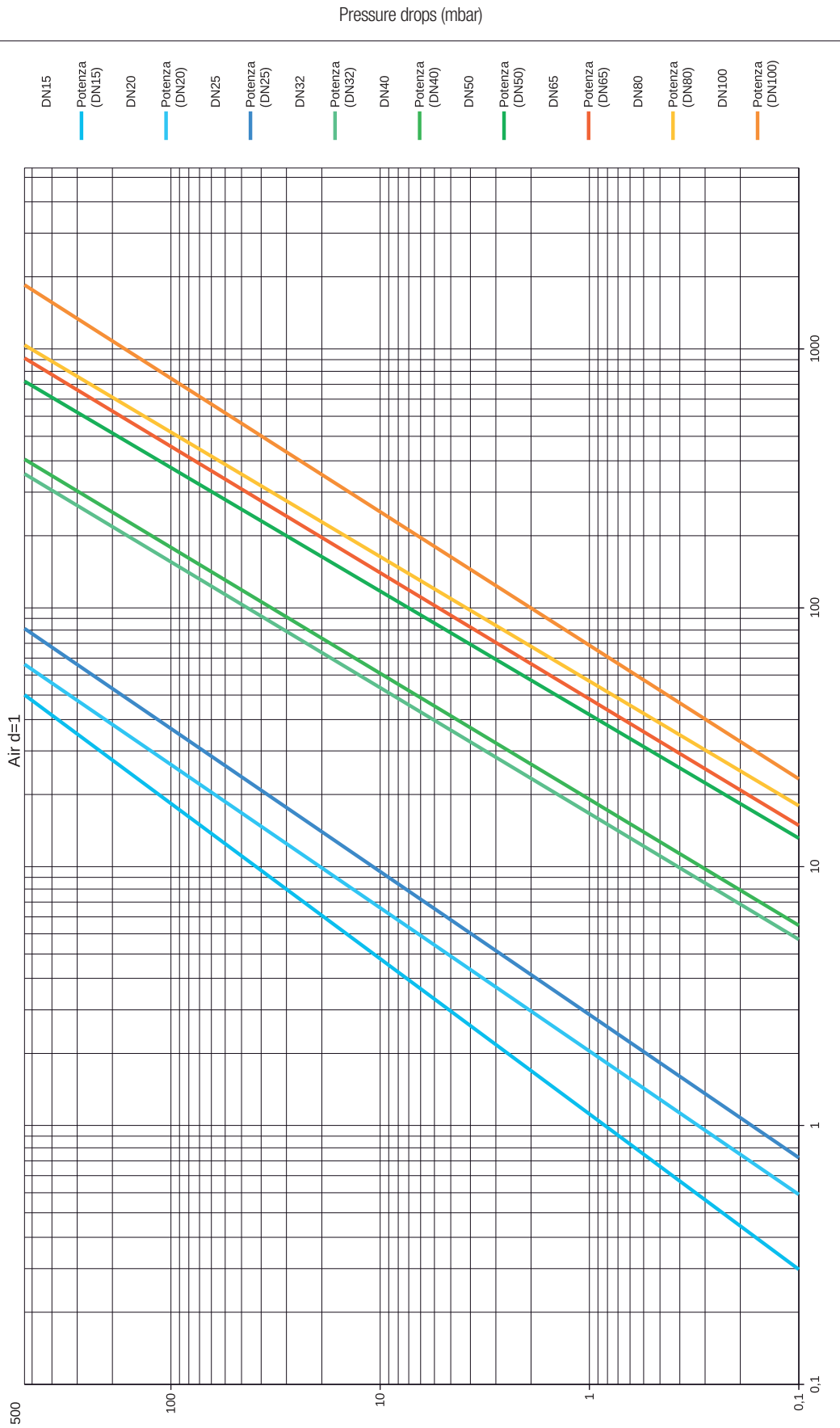
Verify that the whole system works perfectly (the smell of gas odour indicates a leak). Perform periodical maintenance to all the regulation equipments.



Max permitted agulation: 90°

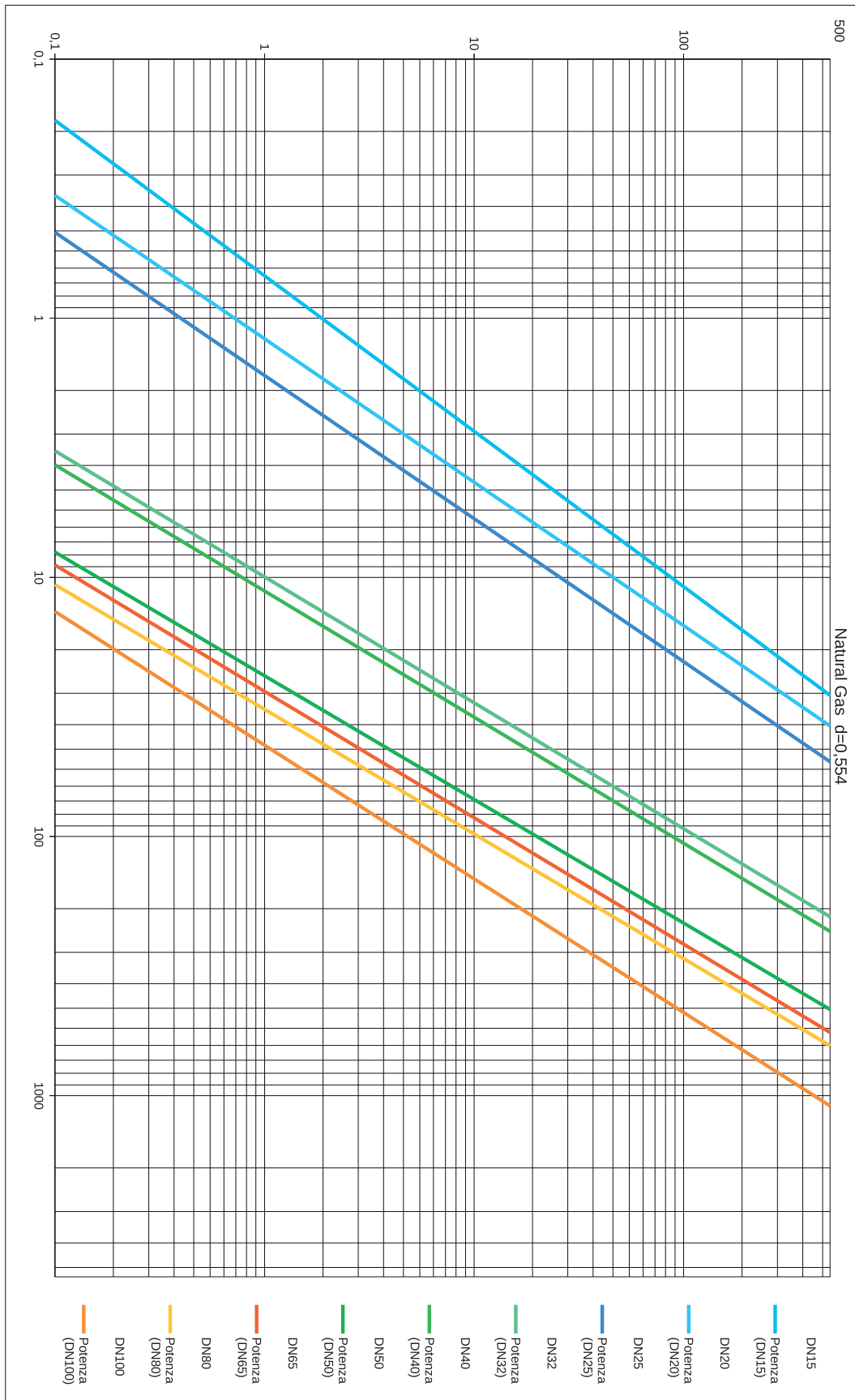


# Gas Governor 500 mbar - Air d=1



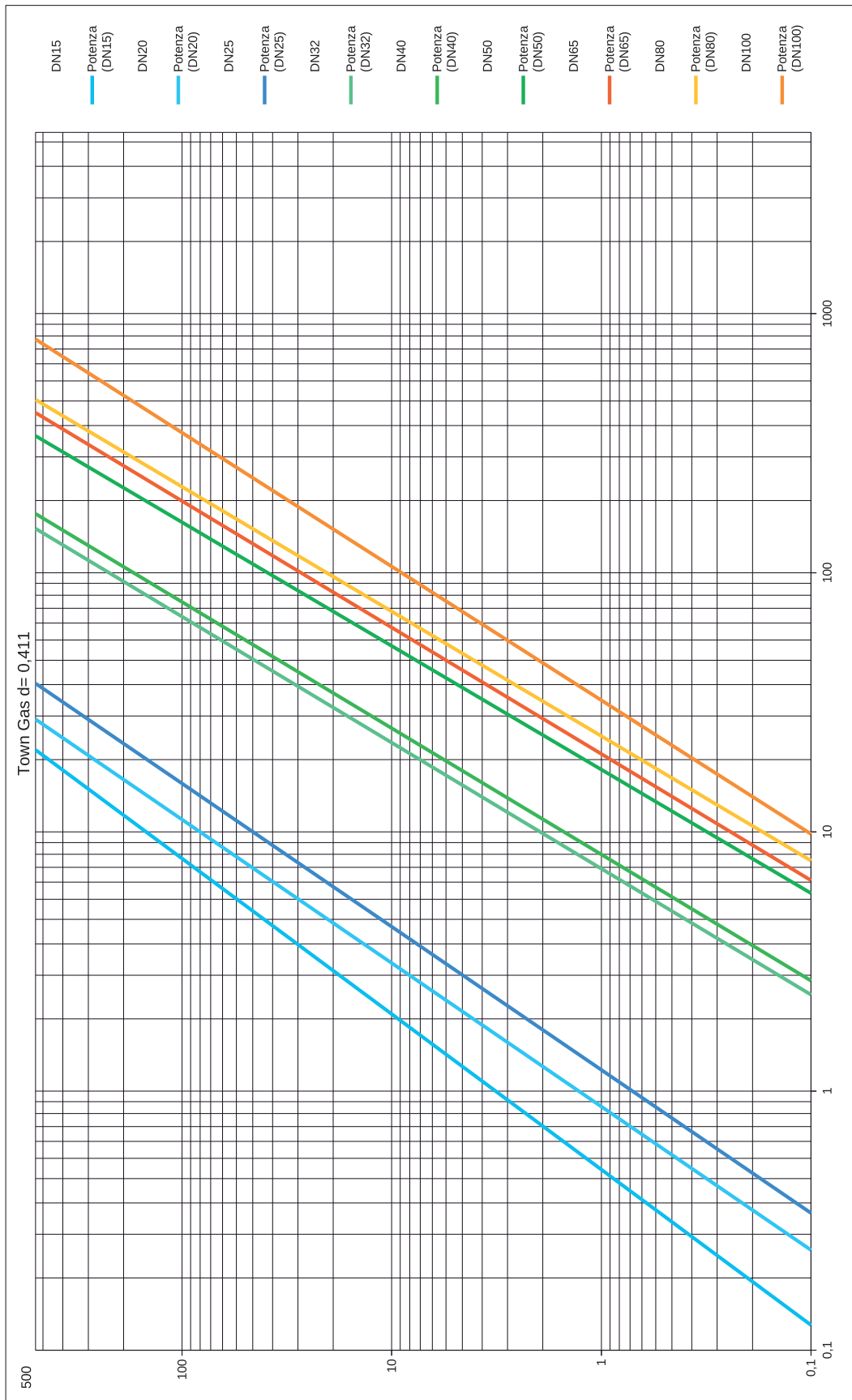
## Gas Governor 500 mbar - Natural Gas d=0,554

Pressure drops (mbar)



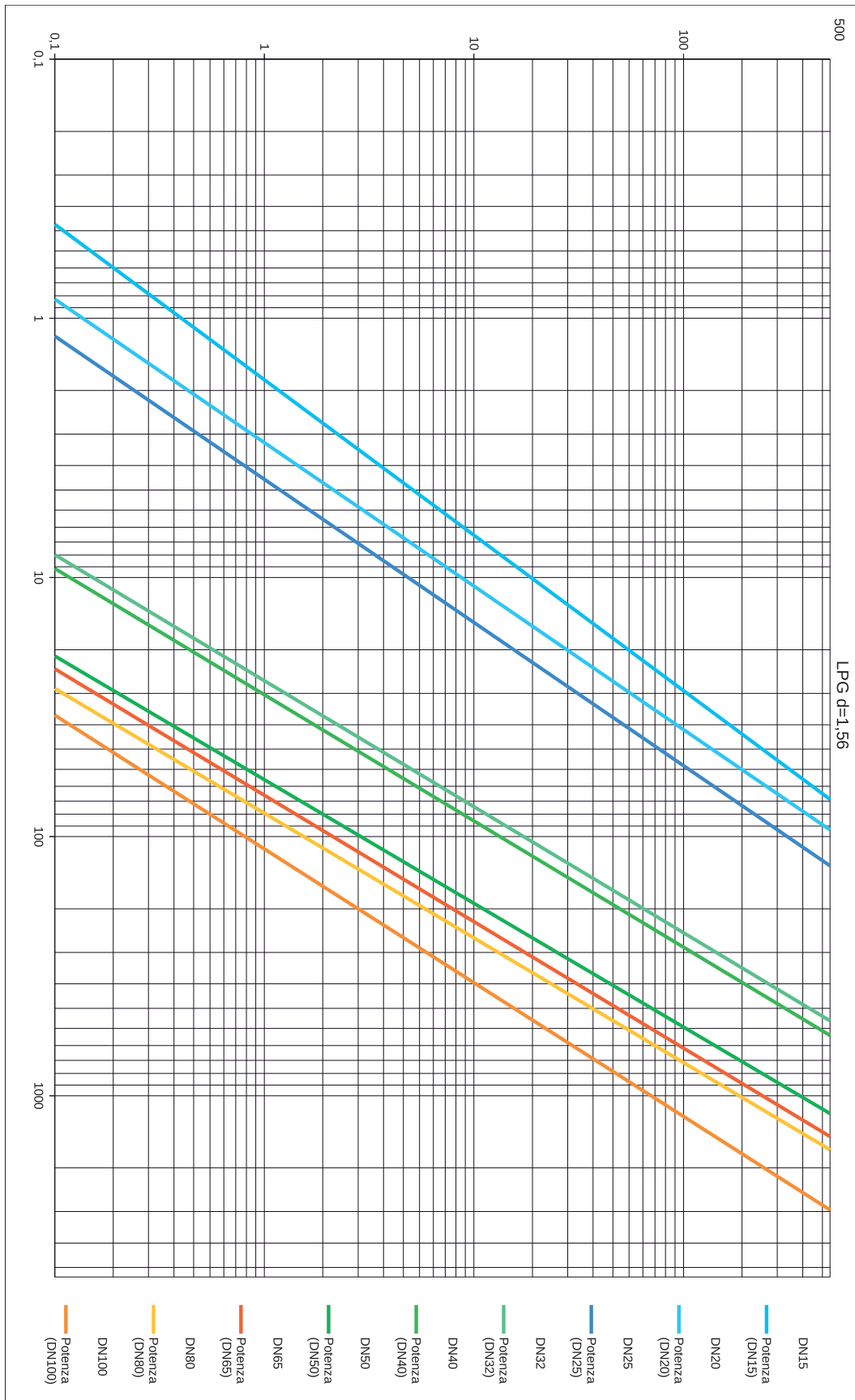
# Gas Governor 500 mbar - Town Gas d=0,411

Pressure drops (mbar)

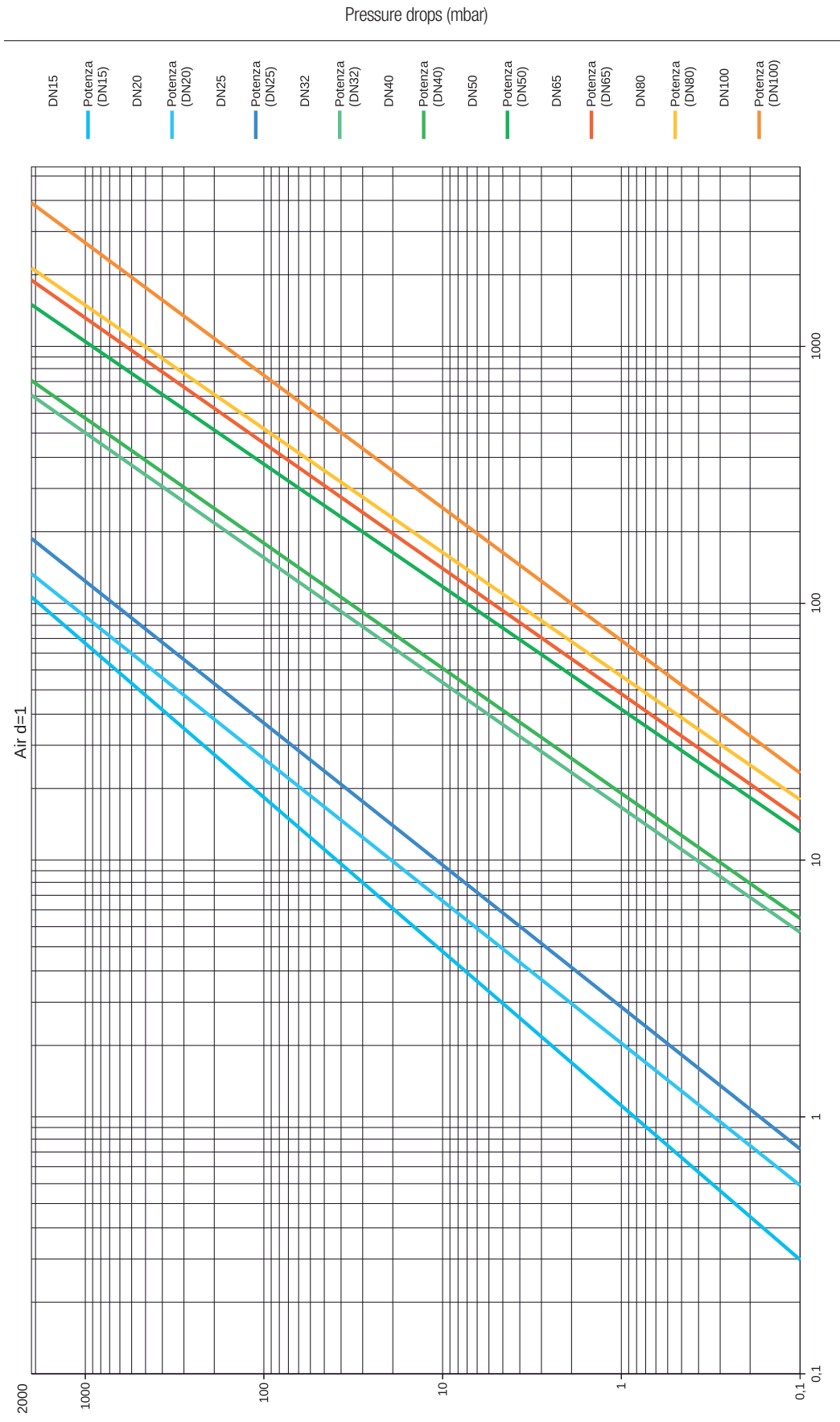


## Gas Governor 500 mbar - LPG d=1,56

Pressure drops (mbar)



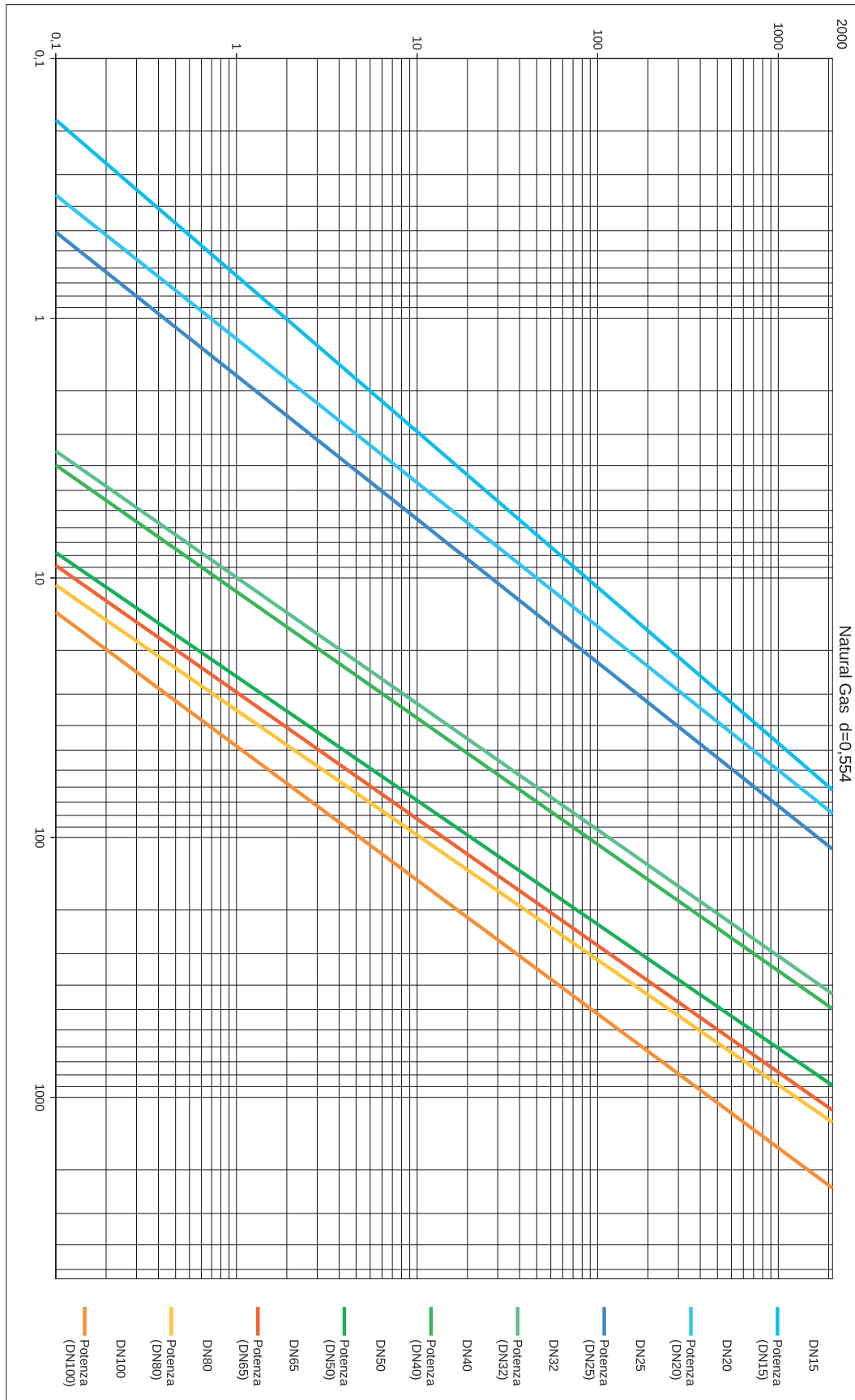
# Gas Governor 1 & 2 bar - Air d=1





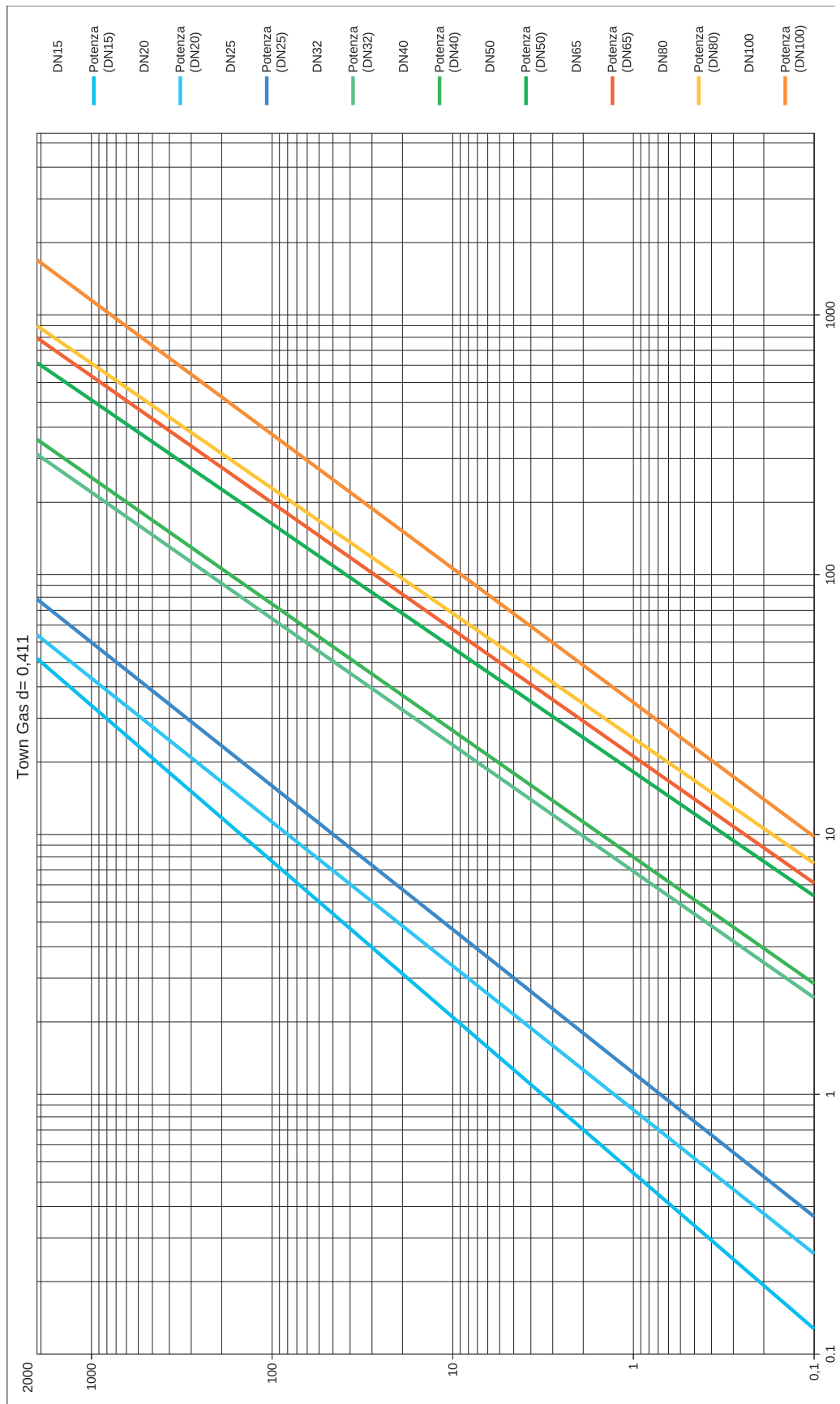
## Gas Governor 1 & 2 bar - Natural Gas d=0,554

Pressure drops (mbar)



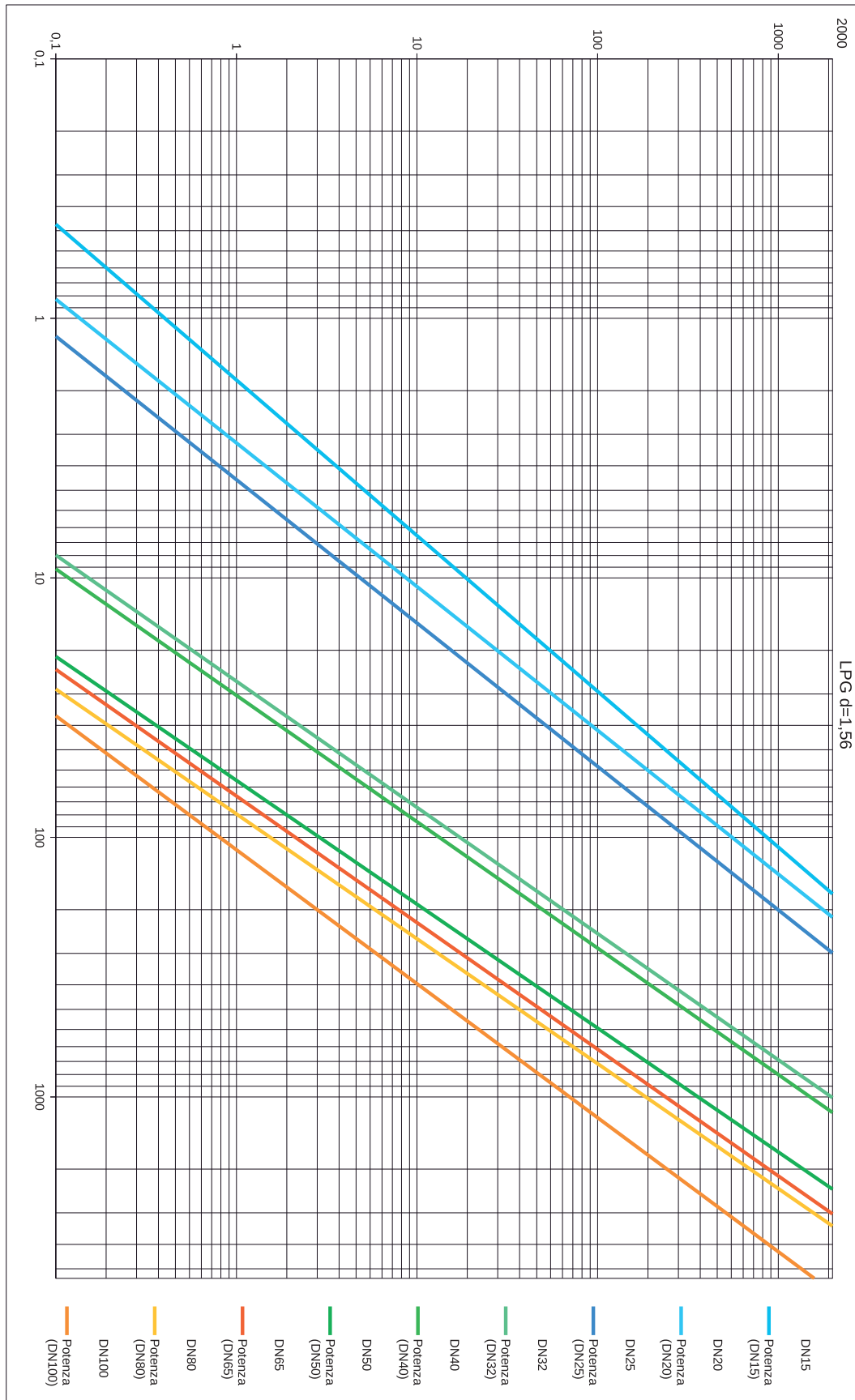
# Gas Governor 1 & 2 bar - Town Gas d=0,411

Pressure drops (mbar)

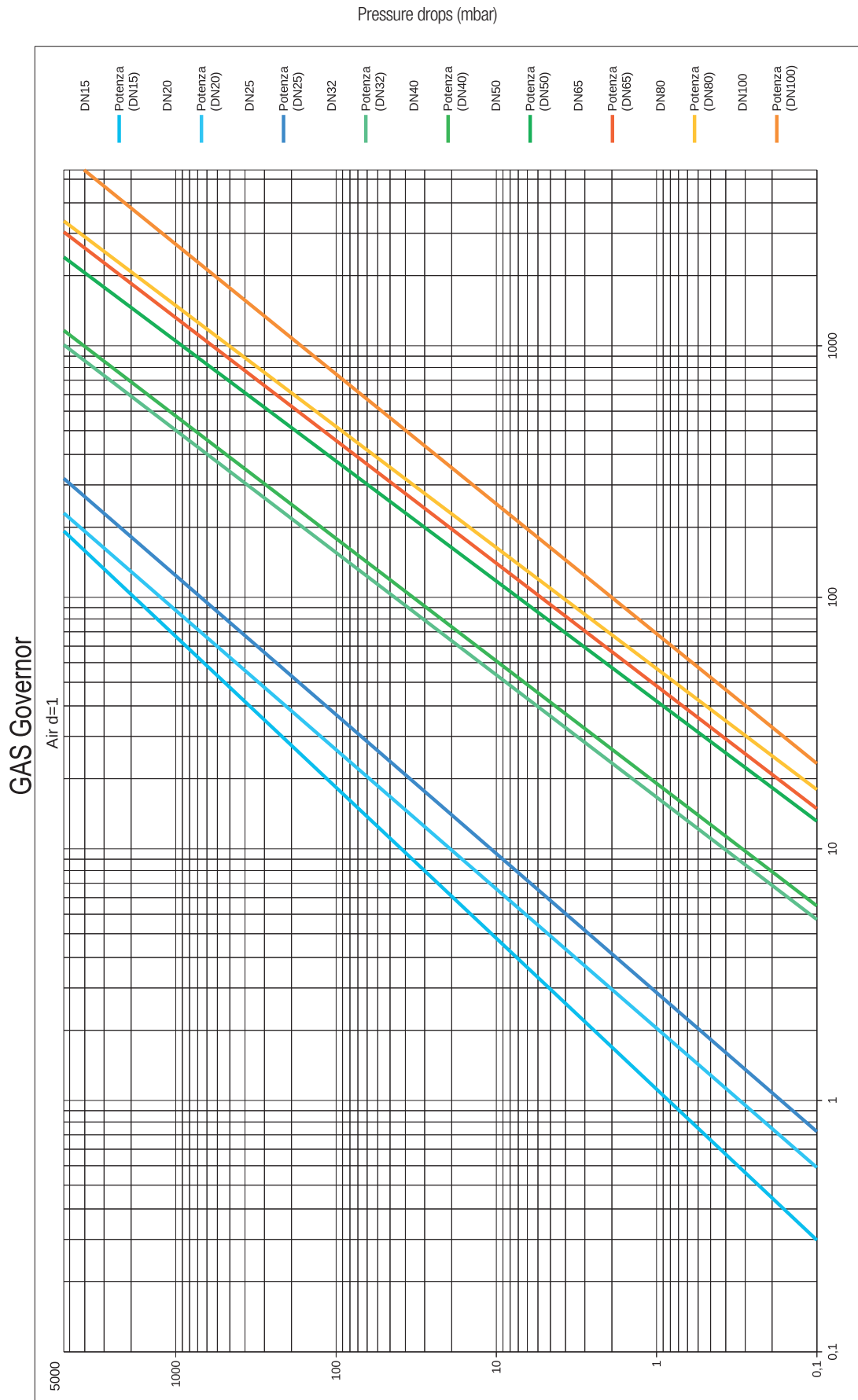


## Gas Governor 1 & 2 bar - LPG d=1,58

Pressure drops (mbar)

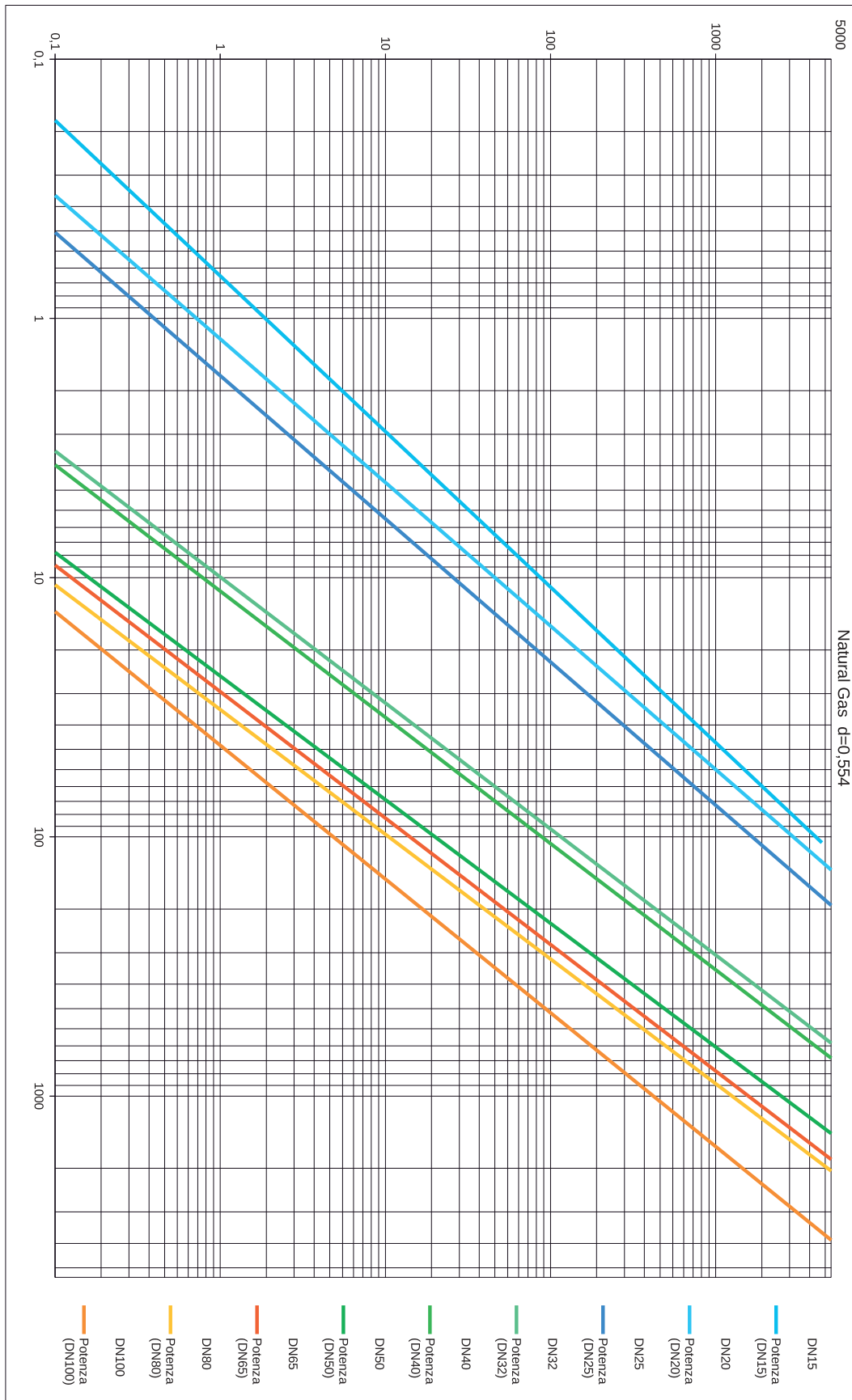


# Gas Governor 5 bar - Air d=1



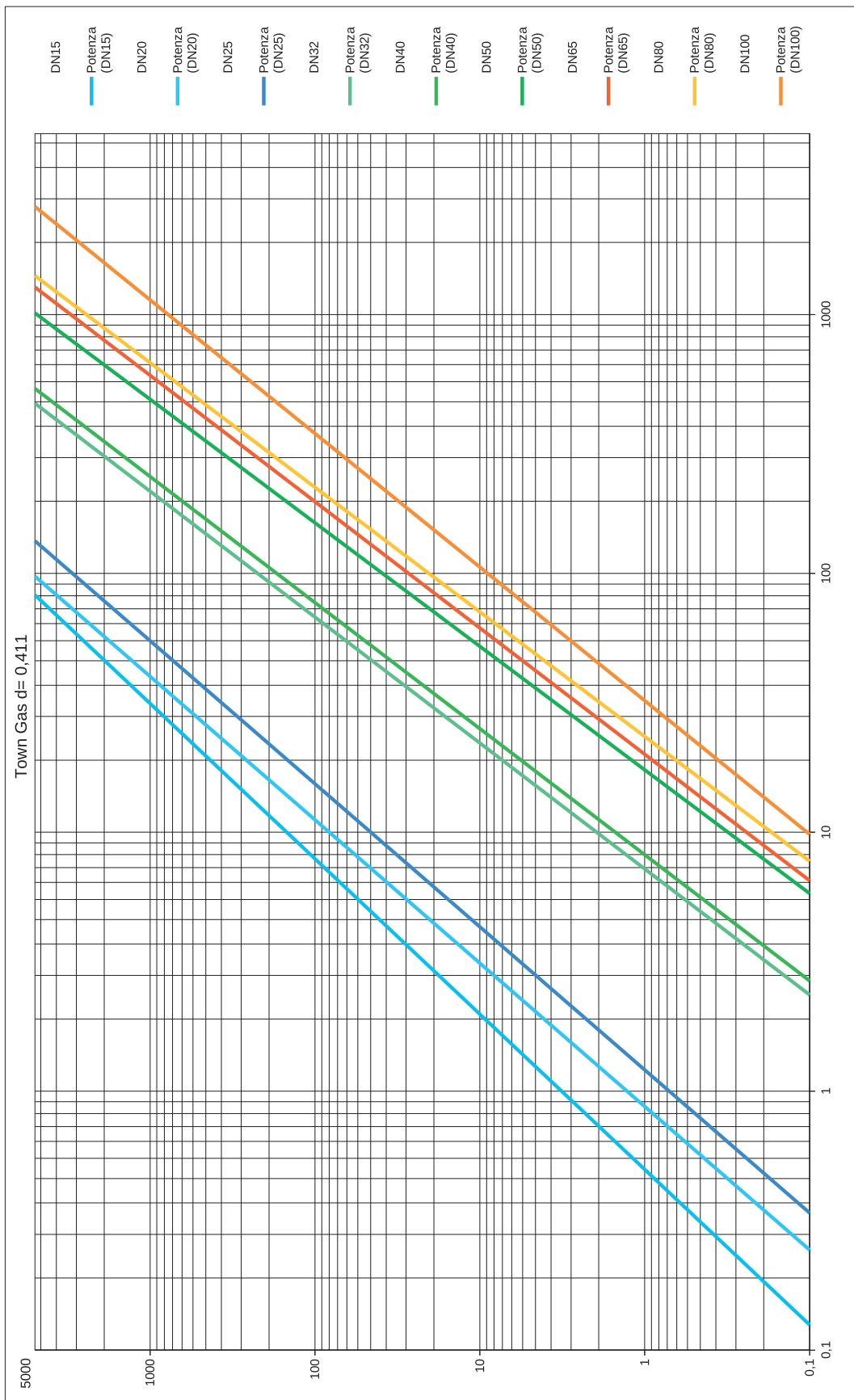
## Gas Governor 5 bar - Natural Gas d=0,554

Pressure drops (mbar)



# Gas Governor 5 bar - Town Gas d=0,411

Pressure drops (mbar)





Gas Governor 5 bar - LPG d=1,58

Pressure drops (mbar)

